

## Recombinant Human GPR180 Protein, GST-tagged

Cat. No. GPR180-4944H Lot. No. (See product label)

### SPECIFICATION

<b>Product Overview</b>	Human ITR partial ORF ( NP_851320.1, 21 a.a. - 120 a.a.) recombinant protein with GST-tag at N-terminal.
<b>Species</b>	Human
<b>Source</b>	Wheat Germ
<b>Description</b>	This gene encodes a protein that is a member of the G protein-coupled receptor superfamily. This protein is produced predominantly in vascular smooth muscle cells and may play an important role in the regulation of vascular remodeling. [provided by RefSeq]
<b>Molecular Mass</b>	36.74 kDa
<b>AA Sequence</b>	QGKTLRGSFSSTAAQDAQGQRIGHFEFHGDHALLCVRINNIHAVVGKEAKLYLFQAQ EWLKLQQSSHGYSCSEKLSKAQLTMTMNQTEHNLTVSQIPSPQ
<b>Applications</b>	Enzyme-linked Immunoabsorbent Assay Western Blot (Recombinant protein) Antibody Production Protein Array
<b>Notes</b>	Best use within three months from the date of receipt of this protein.
<b>Storage</b>	Store at -80 centigrade. Aliquot to avoid repeated freezing and thawing.

 Tel: 1-631-559-9269 1-516-512-3133

 Email: [info@creative-biomart.com](mailto:info@creative-biomart.com)  Fax: 1-631-938-8127

 45-1 Ramsey Road, Shirley, NY 11967, USA

**Storage Buffer** 50 mM Tris-HCl, 10 mM reduced Glutathione, pH=8.0 in the elution buffer.

## GENE INFORMATION

**Gene Name** GPR180 G protein-coupled receptor 180 [ Homo sapiens ]

**Official Symbol** GPR180

**Synonyms** GPR180; G protein-coupled receptor 180; integral membrane protein GPR180; intimal thickness related receptor; ITR; intimal thickness-related receptor; DKFZp586C1322; DKFZp667K0825;

**Gene ID** 160897

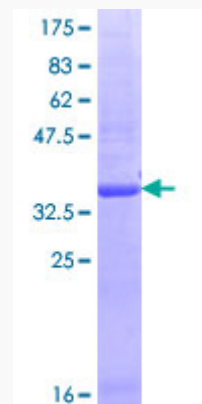
**mRNA Refseq** NM\_180989

**Protein Refseq** NP\_851320

**MIM** 607787

**UniProt ID** Q86V85

**Quality Control Testing**



 Tel: 1-631-559-9269 1-516-512-3133

 Email: [info@creative-biomart.com](mailto:info@creative-biomart.com)  Fax: 1-631-938-8127

 45-1 Ramsey Road, Shirley, NY 11967, USA



12.5% SDS-PAGE Stained with Coomassie Blue

 Tel: 1-631-559-9269 1-516-512-3133

 Email: [info@creative-biomart.com](mailto:info@creative-biomart.com)  Fax: 1-631-938-8127

 45-1 Ramsey Road, Shirley, NY 11967, USA