

## Recombinant Human GPR183 Protein, GST-tagged

Cat. No. GPR183-4017H Lot. No. (See product label)

### SPECIFICATION

<b>Product Overview</b>	Human EBI2 full-length ORF ( AAH20752, 1 a.a. - 361 a.a.) recombinant protein with GST-tag at N-terminal.
<b>Species</b>	Human
<b>Source</b>	Wheat Germ
<b>Description</b>	<p>This gene was identified by the up-regulation of its expression upon Epstein-Barr virus infection of primary B lymphocytes. This gene is predicted to encode a G protein-coupled receptor that is most closely related to the thrombin receptor. Expression of this gene was detected in B-lymphocyte cell lines and lymphoid tissues but not in T-lymphocyte cell lines or peripheral blood T lymphocytes. The function of this gene is unknown. [provided by RefSeq, Jul 2008]</p>
<b>Molecular Mass</b>	65.45 kDa
<b>AA Sequence</b>	<p>MDIQMANNFTPPSATPQGNDLCDLYAHHSTARIVMPLHYSLVFIIGLVGNLLALVVIVQ  NRKKINSTTLYSTNLVISDILFTTALPTRIAYYAMGFDWRIGDALCRITALVFIYINTYAG  VNFMTCLSIDRFIAVVHPLRYNKIKRIEHAKGVCIFVWILVFAQTLPLLINPMSKQEAER  ITCMEYPNFEETKSLPWILLGACFIGYVLPLIILICYSQICCKLFRRTAKQNPLTEKSGVN  KKALNTIILIVFVLCFTPYHVAIIQHMIKKLRFSNFLECSQRHSFQISLHFTVCLMNFN  CCMDPFIYFFACKGYKRKVMRMLKRQVSVSISAVKSAPEENSREMTETQMMIHSK  SSNGK</p>
<b>Applications</b>	Enzyme-linked Immunoabsorbent Assay

 Tel: 1-631-559-9269 1-516-512-3133

 Email: [info@creative-biomart.com](mailto:info@creative-biomart.com)  Fax: 1-631-938-8127

 45-1 Ramsey Road, Shirley, NY 11967, USA

Western Blot (Recombinant protein)  
 Antibody Production  
 Protein Array

<b>Notes</b>	Best use within three months from the date of receipt of this protein.
<b>Storage</b>	Store at -80 centigrade. Aliquot to avoid repeated freezing and thawing.
<b>Storage Buffer</b>	50 mM Tris-HCl, 10 mM reduced Glutathione, pH=8.0 in the elution buffer.

## GENE INFORMATION

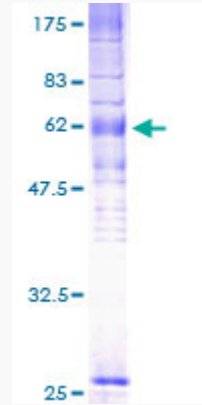
<b>Gene Name</b>	<a href="#">GPR183 G protein-coupled receptor 183 [ Homo sapiens ]</a>
<b>Official Symbol</b>	<a href="#">GPR183</a>
<b>Synonyms</b>	EBI2
<b>Gene ID</b>	<a href="#">1880</a>
<b>mRNA Refseq</b>	<a href="#">NM_004951</a>
<b>Protein Refseq</b>	<a href="#">NP_004942</a>
<b>MIM</b>	<a href="#">605741</a>
<b>UniProt ID</b>	<a href="#">P32249</a>

 Tel: 1-631-559-9269 1-516-512-3133

 Email: [info@creative-biomart.com](mailto:info@creative-biomart.com)  Fax: 1-631-938-8127

 45-1 Ramsey Road, Shirley, NY 11967, USA

**Quality Control  
Testing**



12.5% SDS-PAGE Stained with Coomassie Blue.

 Tel: 1-631-559-9269 1-516-512-3133

 Email: [info@creative-biomart.com](mailto:info@creative-biomart.com)  Fax: 1-631-938-8127

 45-1 Ramsey Road, Shirley, NY 11967, USA