

## Recombinant Human GPR21 Protein, GST-tagged

Cat. No. GPR21-5222H Lot. No. (See product label)

### SPECIFICATION

<b>Product Overview</b>	Human GPR21 full-length ORF ( NP_005285.1, 1 a.a. - 349 a.a.) recombinant protein with GST-tag at N-terminal.
<b>Species</b>	Human
<b>Source</b>	Wheat Germ
<b>Description</b>	This gene encodes a member of the G-protein-coupled receptor 1 family. G-protein coupled receptors are membrane proteins which activate signaling cascades as a response to extracellular stress. The encoded protein activates a Gq signal transduction pathway which mobilizes calcium. [provided by RefSeq, Nov 2012]
<b>Molecular Mass</b>	65.9 kDa
<b>AA Sequence</b>	MNSTLDGNQSSHPFCLLAFGYLETVNFCLEVLIVFLTIVLIISGNIIVIFVFHCAPLLNH HTTSYFIQTMAYADLFVGVSCVVPSLSLLHHPLPVEESLTCQIFGFVVSVLKSVMAS LACISIDRYIAITKPLTYNTLVTPWRLRLCIFIWLYSTLVFLPSFFHWGKPGYHGDVFQ WCAESWHTDSYFTLFIVMMLYAPAALIVCFYFNIFRICQQHTKDISERQARFSSQSG ETGEVQACPKRYAMVLFRITSVFYILWLPYIIYFLESSTGHSNRFASFLTTWLAISN SFCNCVIYSLSNSVFQRGLKRLSGAMCTSCASQTTANDPYTVRSKGPLNGCHI
<b>Applications</b>	Enzyme-linked Immunoabsorbent Assay Western Blot (Recombinant protein) Antibody Production Protein Array

 Tel: 1-631-559-9269 1-516-512-3133

 Email: [info@creative-biomart.com](mailto:info@creative-biomart.com)  Fax: 1-631-938-8127

 45-1 Ramsey Road, Shirley, NY 11967, USA

<b>Notes</b>	Best use within three months from the date of receipt of this protein.
<b>Storage</b>	Store at -80 centigrade. Aliquot to avoid repeated freezing and thawing.
<b>Storage Buffer</b>	50 mM Tris-HCl, 10 mM reduced Glutathione, pH=8.0 in the elution buffer.

## GENE INFORMATION

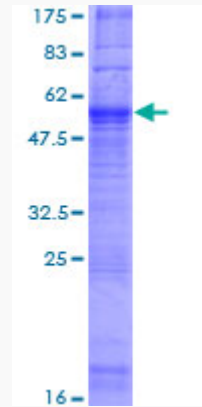
<b>Gene Name</b>	GPR21 G protein-coupled receptor 21 [ Homo sapiens ]
<b>Official Symbol</b>	GPR21
<b>Synonyms</b>	GPR21; G protein-coupled receptor 21; probable G-protein coupled receptor 21;
<b>Gene ID</b>	2844
<b>mRNA Refseq</b>	NM_005294
<b>Protein Refseq</b>	NP_005285
<b>MIM</b>	601909
<b>UniProt ID</b>	Q99679

 Tel: 1-631-559-9269 1-516-512-3133

 Email: [info@creative-biomart.com](mailto:info@creative-biomart.com)  Fax: 1-631-938-8127

 45-1 Ramsey Road, Shirley, NY 11967, USA

**Quality Control  
Testing**



12.5% SDS-PAGE Stained with Coomassie Blue.

 Tel: 1-631-559-9269 1-516-512-3133

 Email: [info@creative-biomart.com](mailto:info@creative-biomart.com)  Fax: 1-631-938-8127

 45-1 Ramsey Road, Shirley, NY 11967, USA