

## Recombinant Human GPR3 Protein, GST-tagged

Cat. No. GPR3-5229H Lot. No. (See product label)

### SPECIFICATION

<b>Product Overview</b>	Human GPR3 full-length ORF ( AAH32702, 1 a.a. - 330 a.a.) recombinant protein with GST-tag at N-terminal.
<b>Species</b>	Human
<b>Source</b>	Wheat Germ
<b>Description</b>	This gene is a member of the G protein-coupled receptor family and is found in the cell membrane. G protein-coupled receptors, characterized by a seven transmembrane domain motif, are involved in translating outside signals into G protein mediated intracellular effects. The encoded protein activates adenylate cyclase and modulates amyloid-beta production in a mouse model, suggesting that it may play a role in Alzheimer's disease. [provided by RefSeq, Oct 2012]
<b>Molecular Mass</b>	62.04 kDa
<b>AA Sequence</b>	MMWGAGSPLAWLSAGSGNVNVSSVGP AEGPTGPAAPLPSPKAWDVVLCISGTLVSCENALVVAIIVGTPAFRAPMFLLVGSLAVADLLAGLGLVLHFAAVFCIGSAEMSLVLVGLAMAFTASIGSLLAITVDRYLSLYNALTYSETTVTRTYVMLALVWGGALGLGLLPVLAWNCLDGLTTCGVVYPLSKNHLVLAIAFFMVFGIMLQLYAQICRIVCRHAQQIALQRHLLPASHYVATRKG IATLAVVLGAF AACWLPFTVYCLLGD AHSPLYTYL TLLPATYNSMINPIIYAFRNQDVQKVLWAVCCCCSSSKIPFRSRSPSDV
<b>Applications</b>	Enzyme-linked Immunoabsorbent Assay Western Blot (Recombinant protein)

 Tel: 1-631-559-9269 1-516-512-3133

 Email: [info@creative-biomart.com](mailto:info@creative-biomart.com)  Fax: 1-631-938-8127

 45-1 Ramsey Road, Shirley, NY 11967, USA

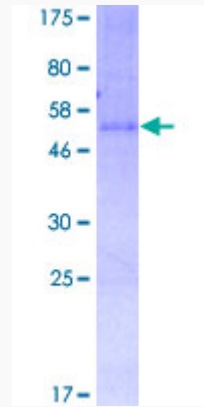
	Antibody Production Protein Array
<b>Notes</b>	Best use within three months from the date of receipt of this protein.
<b>Storage</b>	Store at -80 centigrade. Aliquot to avoid repeated freezing and thawing.
<b>Storage Buffer</b>	50 mM Tris-HCl, 10 mM reduced Glutathione, pH=8.0 in the elution buffer.
<b>GENE INFORMATION</b>	
<b>Gene Name</b>	GPR3 G protein-coupled receptor 3 [ Homo sapiens ]
<b>Official Symbol</b>	GPR3
<b>Synonyms</b>	GPR3; G protein-coupled receptor 3; G-protein coupled receptor 3; ACCA; ACCA orphan receptor; adenylate cyclase constitutive activator;
<b>Gene ID</b>	2827
<b>mRNA Refseq</b>	NM_005281
<b>Protein Refseq</b>	NP_005272
<b>MIM</b>	600241
<b>UniProt ID</b>	P46089

 Tel: 1-631-559-9269 1-516-512-3133

 Email: [info@creative-biomart.com](mailto:info@creative-biomart.com)  Fax: 1-631-938-8127

 45-1 Ramsey Road, Shirley, NY 11967, USA

**Quality Control  
Testing**



12.5% SDS-PAGE Stained with Coomassie Blue.

 Tel: 1-631-559-9269 1-516-512-3133

 Email: [info@creative-biomart.com](mailto:info@creative-biomart.com)  Fax: 1-631-938-8127

 45-1 Ramsey Road, Shirley, NY 11967, USA