

Recombinant Human GPR31 Protein, GST-tagged

Cat. No. GPR31-5232H Lot. No. (See product label)

SPECIFICATION

Product Overview Human GPR31 full-length ORF (NP_005290.1, 1 a.a. - 319 a.a.) recombinant protein with GST-tag at N-terminal.

Species Human

Source Wheat Germ

Description GPR31 (G Protein-Coupled Receptor 31) is a Protein Coding gene. Among its related pathways are Peptide ligand-binding receptors and Signaling by GPCR. GO annotations related to this gene include G-protein coupled receptor activity. An important paralog of this gene is HCAR3.

Molecular Mass 61.5 kDa

AA Sequence
MPFPNCSAPSTVVAVGVLLGLECGLLLGNAVALWTFVFRVVRVWKPYAVYLLNL
ALADLLLAACLPFLAAFYLSLQAWHLGRVGCWALRFLDLRSRSGMAFLAAVALDRY
LRVVHPRLKVNLLSPQAALGVSGLVWLLMVALTCPGLLISEAAQNSTRCHSFYSRAD
GSFSIIWQEALSCLQFVLPFGLIVFCNAGIIRALQKRLREPEKQPQLQRAQALVTLVVV
LFALCFLPCFLARVLMHIFQNLGSCRALCAVAHTSDVTGSLTYLHSLVLPVVVYCFSSP
TFRSSYRRVFHTLRGKGQAAEPPDFNPRDSYS

Applications
Enzyme-linked Immunoabsorbent Assay
Western Blot (Recombinant protein)
Antibody Production
Protein Array

 Tel: 1-631-559-9269 1-516-512-3133

 Email: info@creative-biomart.com  Fax: 1-631-938-8127

 45-1 Ramsey Road, Shirley, NY 11967, USA

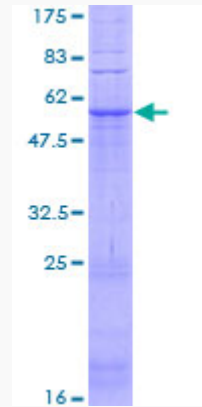
| | |
|-------------------------|---|
| Notes | Best use within three months from the date of receipt of this protein. |
| Storage | Store at -80 centigrade. Aliquot to avoid repeated freezing and thawing. |
| Storage Buffer | 50 mM Tris-HCl, 10 mM reduced Glutathione, pH=8.0 in the elution buffer. |
| GENE INFORMATION | |
| Gene Name | GPR31 G protein-coupled receptor 31 [Homo sapiens] |
| Official Symbol | GPR31 |
| Synonyms | GPR31; G protein-coupled receptor 31; 12-(S)-hydroxy-5,8,10,14-eicosatetraenoic acid receptor; 12 (S) HETE acid receptor; 12 HETER; HETER1; hydroxyeicosatetraenoic (HETE) acid receptor 1; 12-(S)-HETE receptor; 12-(S)-HETE acid receptor; G-protein coupled receptor 31; probable G-protein coupled receptor 31; bA517H2.2 (G protein-coupled receptor 31); 12-(S)-hydroxy-5,8,10,14-eicosatetraenoic acid (HETE) receptor; HETER; 12-HETER; |
| Gene ID | 2853 |
| mRNA Refseq | NM_005299 |
| Protein Refseq | NP_005290 |
| MIM | 602043 |
| UniProt ID | O00270 |

 Tel: 1-631-559-9269 1-516-512-3133

 Email: info@creative-biomart.com  Fax: 1-631-938-8127

 45-1 Ramsey Road, Shirley, NY 11967, USA

**Quality Control
Testing**



12.5% SDS-PAGE Stained with Coomassie Blue.

 Tel: 1-631-559-9269 1-516-512-3133

 Email: info@creative-biomart.com  Fax: 1-631-938-8127

 45-1 Ramsey Road, Shirley, NY 11967, USA