

Recombinant Human GPR34 Protein, GST-tagged

Cat. No. GPR34-5235H Lot. No. (See product label)

SPECIFICATION

Product Overview	Human GPR34 full-length ORF (NP_005291.1, 1 a.a. - 381 a.a.) recombinant protein with GST-tag at N-terminal.
Species	Human
Source	Wheat Germ
Description	G protein-coupled receptors (GPCRs), such as GPR34, are integral membrane proteins containing 7 putative transmembrane domains (TMs). These proteins mediate signals to the interior of the cell via activation of heterotrimeric G proteins that in turn activate various effector proteins, ultimately resulting in a physiologic response.[supplied by OMIM
Molecular Mass	70.3 kDa
AA Sequence	MRSHTITMTTTSVSSWPYSSHRMRFITNHSDQPPQNFSATPNVTTCPMDEKLLSTV LTTSYSVIFIVGLVGNIIALYVFLGIHRKRNSIQIYLLNVAIADLLIFCLPFRIMYHINQNK WTLGVILCKVVGTLYFMYNMYISIILLGFISLDRIYIKINRSIQQRKAITTKQSIYVCCIVWM LALGGFLTMIILTLKKGHNSTMCFHYRDKHNAKGEAIFNFILVVMFWLIFLLIILSYIKI GKNLLRISKRRSKFPNSGKYATTARNSFIVLIIFTICFVPYHAFRFIYISSQLNVSSCYW KEIVHKTNEIMLVLSSFNSCLDPVMYFLMSSNIRKIMCQLLFRRFQGEPSRSESTSEF KPGYSLHDTSVAVKIQSSSKST
Applications	Enzyme-linked Immunoabsorbent Assay Western Blot (Recombinant protein)

 Tel: 1-631-559-9269 1-516-512-3133

 Email: info@creative-biomart.com  Fax: 1-631-938-8127

 45-1 Ramsey Road, Shirley, NY 11967, USA



Antibody Production
Protein Array

Notes

Best use within three months from the date of receipt of this protein.

Storage

Store at -80 centigrade. Aliquot to avoid repeated freezing and thawing.

Storage Buffer

50 mM Tris-HCl, 10 mM reduced Glutathione, pH=8.0 in the elution buffer.

GENE INFORMATION

Gene Name

GPR34 G protein-coupled receptor 34 [Homo sapiens]

Official Symbol

GPR34

Synonyms

GPR34; G protein-coupled receptor 34; probable G-protein coupled receptor 34;

Gene ID

2857

mRNA Refseq

NM_001097579

Protein Refseq

NP_001091048

MIM

300241

UniProt ID

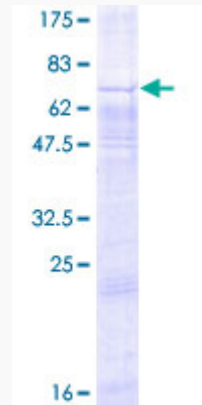
Q9UPC5

Tel: 1-631-559-9269 1-516-512-3133

Email: info@creative-biomart.com Fax: 1-631-938-8127

45-1 Ramsey Road, Shirley, NY 11967, USA

**Quality Control
Testing**



12.5% SDS-PAGE Stained with Coomassie Blue.

 Tel: 1-631-559-9269 1-516-512-3133

 Email: info@creative-biomart.com  Fax: 1-631-938-8127

 45-1 Ramsey Road, Shirley, NY 11967, USA