

Recombinant Human GPR35 Full Length Transmembrane protein, His-tagged

Cat. No. GPR35-1484H Lot. No. (See product label)

SPECIFICATION

Product Overview	Recombinant Human GPR35 protein(Q9HC97)(1-309aa), fused to N-terminal His tag, was expressed in E. coli.
Species	Human
Source	E.coli
ProteinLength	1-309aa
Form	If the delivery form is liquid, the default storage buffer is Tris/PBS-based buffer, 5%-50% glycerol. If the delivery form is lyophilized powder, the buffer before lyophilization is Tris/PBS-based buffer, 6% Trehalose, pH 8.0.
Molecular Mass	36.9 kDa
AA Sequence	MNGTYNTCGSSDLTWPPAIKLGFYAYLGVLLVLGLLLNSLALWVFCCRMQQWTETR IYMTNLAVADLCLLCTLPFVLHSLRDTSDTPLCQLSQGIYLTNRYMSISLVTAIAVDRY VAVRHPLRARGLRSPRQAAAVCAVLWVLVIGSLVARWLLGIQEGGFCFRSTRHNFN SMAFPLLGFYLPLAVVVVFCSLKVVTTALAQRPPTDVQGAEATRKAARMVWANLLVFV VCFLPLHVGLTVRLAVGWNACALLETIRRALYITSKLSDANCCDAICYYYMAKEFQE ASALAVAPSAKAHKSQDSL CVTLA
Purity	Greater than 90% as determined by SDS-PAGE.

 Tel: 1-631-559-9269 1-516-512-3133

 Email: info@creative-biomart.com  Fax: 1-631-938-8127

 45-1 Ramsey Road, Shirley, NY 11967, USA

Storage Store at -20°C/-80°C upon receipt, aliquoting is necessary for mutiple use. Avoid repeated freeze-thaw cycles.

Reconstitution Please reconstitute protein in deionized sterile water to a concentration of 0.1-1.0 mg/mL. We recommend to add 5-50% of glycerol (final concentration) and aliquot for long-term storage at -20°C/-80°C. Our default final concentration of glycerol is 50%.

GENE INFORMATION

Gene Name GPR35 G protein-coupled receptor 35 [Homo sapiens]

Official Symbol GPR35

Synonyms GPR35; G protein-coupled receptor 35; G-protein coupled receptor 35; KYNA receptor; kynurenic acid receptor;

Gene ID 2859

mRNA Refseq NM_001195381

Protein Refseq NP_001182310

MIM 602646

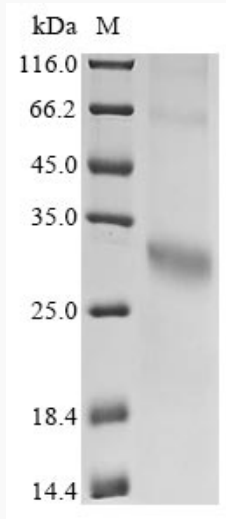
UniProt ID Q9HC97

 Tel: 1-631-559-9269 1-516-512-3133

 Email: info@creative-biomart.com  Fax: 1-631-938-8127

 45-1 Ramsey Road, Shirley, NY 11967, USA

SDS-PAGE



 Tel: 1-631-559-9269 1-516-512-3133

 Email: info@creative-biomart.com  Fax: 1-631-938-8127

 45-1 Ramsey Road, Shirley, NY 11967, USA