

Recombinant Human GPR35 protein, His-GST-tagged

Cat. No. GPR35-15H Lot. No. (See product label)

SPECIFICATION

Product Overview	Recombinant Human GPR35 protein(NP_001182310.1)(Arg240~Ala309), fused to two tags, His and GST tag at the N-terminal, was expressed in E. coli.
Species	Human
Source	E.coli
ProteinLength	Arg240~Ala309
Form	20mM Tris, 150mM NaCl, pH8.0, containing 1mM EDTA, 1mM DTT, 0.01% SKL, 5% Trehalose and Proclin300.
Molecular Mass	41kDa(Analysis of differences refer to the manual)
AA Sequence	RLAVGWNACALLETIRRALYITSKLSDANCCCLDAICYYYMAKEFQEASALAVAPSAKA HKSQDSL CVTLA
Endotoxin	<1.0EU per 1g (determined by the LAL method)
Purity	> 95%
Applications	Positive Control; Immunogen; SDS-PAGE; WB. If bio-activity of the protein is needed, please check active protein.
Notes	The kit is designed for research use only, we will not be responsible for any issue if

 Tel: 1-631-559-9269 1-516-512-3133

 Email: info@creative-biomart.com  Fax: 1-631-938-8127

 45-1 Ramsey Road, Shirley, NY 11967, USA

the kit was used in clinical diagnostic or any other procedures.

Stability

The thermal stability is described by the loss rate. The loss rate was determined by accelerated thermal degradation test, that is, incubate the protein at 37°C for 48h, and no obvious degradation and precipitation were observed. The loss rate is less than 5% within the expiration date under appropriate storage condition.

Storage

Avoid repeated freeze/thaw cycles. Store at 2-8°C for one month. Aliquot and store at -80°C for 12 months.

Reconstitution

Reconstitute in 20mM Tris, 150mM NaCl (pH8.0) to a concentration of 0.1-1.0 mg/mL. Do not vortex.

GENE INFORMATION

Gene Name

GPR35 G protein-coupled receptor 35 [Homo sapiens (human)]

Official Symbol

GPR35

Synonyms

KYNA receptor; Kynurenic acid receptor

Gene ID

2859

mRNA Refseq

NM_001195381.2

Protein Refseq

NP_001182310.1

MIM

602646

UniProt ID

Q9HC97

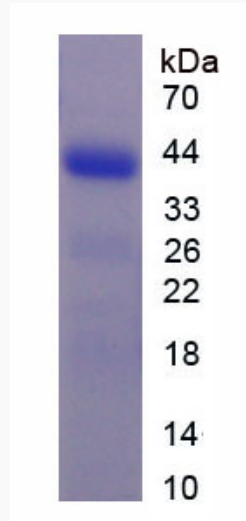
 Tel: 1-631-559-9269 1-516-512-3133

 Email: info@creative-biomart.com  Fax: 1-631-938-8127

 45-1 Ramsey Road, Shirley, NY 11967, USA



SDS-PAGE of
GPR35-15H



Tel: 1-631-559-9269 1-516-512-3133

Email: info@creative-biomart.com Fax: 1-631-938-8127

45-1 Ramsey Road, Shirley, NY 11967, USA