

Recombinant Human GPR39 Protein, GST-tagged

Cat. No. GPR39-5241H Lot. No. (See product label)

SPECIFICATION

| | |
|-------------------------|---|
| Product Overview | Human GPR39 full-length ORF (NP_001499.1, 1 a.a. - 453 a.a.) recombinant protein with GST-tag at N-terminal. |
| Species | Human |
| Source | Wheat Germ |
| Description | This gene is a member of the ghrelin receptor family and encodes a rhodopsin-type G-protein-coupled receptor (GPCR). The encoded protein is involved in zinc-dependent signaling in epithelial tissue in intestines, prostate and salivary glands. The protein may also be involved in the pathophysiology of depression. [provided by RefSeq, Jun 2016] |
| Molecular Mass | 77.7 kDa |
| AA Sequence | MASPSLPGSDCSQIIDHSHVPEFEVATWIKITLILVYLIIFVMGLLGNSATIRVTQVLQK KGYLQKEVTDHMSLACSDILVFLIGMPMEFYSIWNPLTTSSYTLCKLHTFLFEACS YATLLHVLTLSEFYIAICHPFRYKAVSGPCQVKLLIGFVWVTSALVALPLL FAMGTEY PLVNVPSHRGLTCNRSSTRHHEQPETSNSICTNLSSRWTVFQSSIFGAFVYLVVL LSVAFMCWNMMQVLMKSQKGLAGGTRPPQLRKSESEESRTARRQTIIFRLIVVTL AVCWMPNQIRRIMAAAKPKHDWTRSYFRAYMILLPFSETFFYLSSVINPLLYTVSSQ QFRRVFVQVLCRSLQHANHEKRLRVHAHSTTDSARFVQRPLL FASRRQSSARRT EKIFLSTFQSEAE PQSKSQLSLESLEPN SGAKPANSAAENG FQEHEV |
| Applications | Enzyme-linked Immunoabsorbent Assay |

 Tel: 1-631-559-9269 1-516-512-3133

 Email: info@creative-biomart.com  Fax: 1-631-938-8127

 45-1 Ramsey Road, Shirley, NY 11967, USA

Western Blot (Recombinant protein)
 Antibody Production
 Protein Array

| | |
|-----------------------|--|
| Notes | Best use within three months from the date of receipt of this protein. |
| Storage | Store at -80 centigrade. Aliquot to avoid repeated freezing and thawing. |
| Storage Buffer | 50 mM Tris-HCl, 10 mM reduced Glutathione, pH=8.0 in the elution buffer. |

GENE INFORMATION

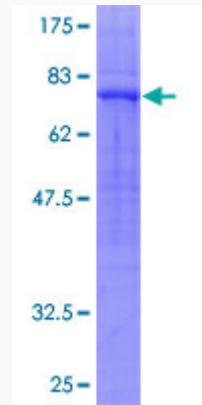
| | |
|------------------------|---|
| Gene Name | GPR39 G protein-coupled receptor 39 [Homo sapiens] |
| Official Symbol | GPR39 |
| Synonyms | GPR39; G protein-coupled receptor 39; G Protein-Coupled Receptor 39 |
| Gene ID | 2863 |
| mRNA Refseq | NM_001508 |
| Protein Refseq | NP_001499 |
| MIM | 602886 |
| UniProt ID | O43194 |

 Tel: 1-631-559-9269 1-516-512-3133

 Email: info@creative-biomart.com  Fax: 1-631-938-8127

 45-1 Ramsey Road, Shirley, NY 11967, USA

**Quality Control
Testing**



12.5% SDS-PAGE Stained with Coomassie Blue.

 Tel: 1-631-559-9269 1-516-512-3133

 Email: info@creative-biomart.com  Fax: 1-631-938-8127

 45-1 Ramsey Road, Shirley, NY 11967, USA