

Recombinant Human GPR4 Protein, GST-tagged

Cat. No. GPR4-5243H Lot. No. (See product label)

SPECIFICATION

Product Overview	Human GPR4 full-length ORF (NP_005273.1, 1 a.a. - 362 a.a.) recombinant protein with GST-tag at N-terminal.
Species	Human
Source	Wheat Germ
Description	GPR4 (G Protein-Coupled Receptor 4) is a Protein Coding gene. Diseases associated with GPR4 include Central Hypoventilation Syndrome, Congenital. Among its related pathways are RET signaling and Peptide ligand-binding receptors. GO annotations related to this gene include G-protein coupled receptor activity. An important paralog of this gene is GPR68.
Molecular Mass	67.4 kDa
AA Sequence	MGNHTWEGCHVDSRVDHLFPPSLYIFVIGVGLPTNCLALWAAYRQVQQRNELGVYL MNLSIADLLYICTLPLWVDYFLHHDNWIHGP GSKLFGFIFYTNIYISIAFLCCISVDRY LAVAHPLRFARLRRVKTAVAVSSVWVWATELGANSAPLFHDELFRDRYNHTFCFEKFP MEGWVAVWMNLYRVFVGF LFPWALMLLSYRGILRAVRGVSSTERQEKAKIKRLALSLI AIVLVCFAPYHVLLLSRSAYLGRPWDCGFEERVFSAYHSSLAFTSLNVCVADPILYCL VNEGARSDVAKALHNLRLFLASDKPQEMANASLTLETPLTSKRNSTAKAMTGSWAA TPPSQGDQVQLKMLPPAQ
Applications	Enzyme-linked Immunoabsorbent Assay Western Blot (Recombinant protein)

 Tel: 1-631-559-9269 1-516-512-3133

 Email: info@creative-biomart.com  Fax: 1-631-938-8127

 45-1 Ramsey Road, Shirley, NY 11967, USA

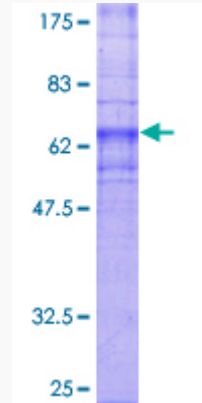
	Antibody Production Protein Array
Notes	Best use within three months from the date of receipt of this protein.
Storage	Store at -80 centigrade. Aliquot to avoid repeated freezing and thawing.
Storage Buffer	50 mM Tris-HCl, 10 mM reduced Glutathione, pH=8.0 in the elution buffer.
GENE INFORMATION	
Gene Name	GPR4 G protein-coupled receptor 4 [Homo sapiens]
Official Symbol	GPR4
Synonyms	GPR4; G protein-coupled receptor 4; G-protein coupled receptor 4; G-protein coupled receptor 19;
Gene ID	2828
mRNA Refseq	NM_005282
Protein Refseq	NP_005273
MIM	600551
UniProt ID	P46093

 Tel: 1-631-559-9269 1-516-512-3133

 Email: info@creative-biomart.com  Fax: 1-631-938-8127

 45-1 Ramsey Road, Shirley, NY 11967, USA

**Quality Control
Testing**



12.5% SDS-PAGE Stained with Coomassie Blue.

 Tel: 1-631-559-9269 1-516-512-3133

 Email: info@creative-biomart.com  Fax: 1-631-938-8127

 45-1 Ramsey Road, Shirley, NY 11967, USA