

Recombinant Human GPR45 Protein, GST-tagged

Cat. No. GPR45-5248H Lot. No. (See product label)

SPECIFICATION

Product Overview	Human GPR45 full-length ORF (NP_009158.3, 1 a.a. - 372 a.a.) recombinant protein with GST-tag at N-terminal.
Species	Human
Source	Wheat Germ
Description	This intronless gene encodes a member of the G protein-coupled receptor (GPCR) family. Members of this protein family contain seven putative transmembrane domains and may mediate signaling processes to the interior of the cell via activation of heterotrimeric G proteins. This protein may function in the central nervous system. [provided by RefSeq]
Molecular Mass	68.4 kDa
AA Sequence	MACNSTSLEAYTYLLLNTSNASDSGSTQLPAPLRISLAIVMLLMTVVGFLGNTVVCIIV YQRPAMRSAINLLLATLAFSDIMLSLCCMPFTAVTLITVRWHFGDHFRCRLSATLYWFF VLEGVAILLIISVDRFLIIVQRQDKLNPRRAKVIIAVSWVLSFCIAGPSLTGWTLVEVPA RAPQCVLGYTELPADRAYVVTLVAVFFAPFGVMLCAYMCILNTRKNAVRVHNQS DSLDRQLTRAGLRRLQRQQQVSDLSFKTKAFTTILILFVGFSLCWLPHSVYSLLSV FSQRFYCGSSFYATSTCVLWLSYLKSVFNPIVYCWRIKKFREACIELLPQTFQILPKV PERIRRRIQPSTVYVCNENQSAV
Applications	Enzyme-linked Immunoabsorbent Assay Western Blot (Recombinant protein)

 Tel: 1-631-559-9269 1-516-512-3133

 Email: info@creative-biomart.com  Fax: 1-631-938-8127

 45-1 Ramsey Road, Shirley, NY 11967, USA

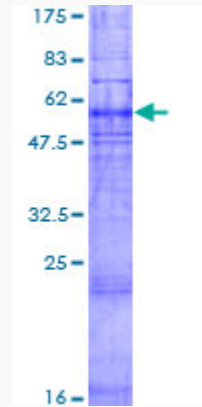
	Antibody Production Protein Array
Notes	Best use within three months from the date of receipt of this protein.
Storage	Store at -80 centigrade. Aliquot to avoid repeated freezing and thawing.
Storage Buffer	50 mM Tris-HCl, 10 mM reduced Glutathione, pH=8.0 in the elution buffer.
GENE INFORMATION	
Gene Name	GPR45 G protein-coupled receptor 45 [Homo sapiens]
Official Symbol	GPR45
Synonyms	GPR45; G protein-coupled receptor 45; probable G-protein coupled receptor 45; PSP24; PSP24A; PSP24-1; PSP24-alpha; high-affinity lysophosphatidic acid receptor; PSP24(ALPHA);
Gene ID	11250
mRNA Refseq	NM_007227
Protein Refseq	NP_009158
MIM	604838
UniProt ID	Q9Y5Y3

 Tel: 1-631-559-9269 1-516-512-3133

 Email: info@creative-biomart.com  Fax: 1-631-938-8127

 45-1 Ramsey Road, Shirley, NY 11967, USA

**Quality Control
Testing**



12.5% SDS-PAGE Stained with Coomassie Blue.

 Tel: 1-631-559-9269 1-516-512-3133

 Email: info@creative-biomart.com  Fax: 1-631-938-8127

 45-1 Ramsey Road, Shirley, NY 11967, USA