

## Recombinant Human GPR65 Protein, GST-tagged

Cat. No. GPR65-5261H Lot. No. (See product label)

### SPECIFICATION

<b>Product Overview</b>	Human GPR65 full-length ORF ( NP_003599.2, 1 a.a. - 337 a.a.) recombinant protein with GST-tag at N-terminal.
<b>Species</b>	Human
<b>Source</b>	Wheat Germ
<b>Description</b>	GPR65 (G Protein-Coupled Receptor 65) is a Protein Coding gene. Diseases associated with GPR65 include Rectal Prolapse. Among its related pathways are RET signaling and Peptide ligand-binding receptors. GO annotations related to this gene include G-protein coupled receptor activity. An important paralog of this gene is GPR4.
<b>Molecular Mass</b>	65.7 kDa
<b>AA Sequence</b>	MNSTCIEEQHDLDPVIVYIFVIIVSIPANIGSLCVSFLQAKKESELGIYLFSLSLSDLL YALTLPLWIDYTWNKDNWTFSPALCKGSAFLMYMNFYSSTAFLTCIAVDRYLAVVYP LKFFFLRTRRFALMVSLSIWILETIFNAVMLWEDETVVEYCDAEKSNFTLCYDKYPLE KWQINLNLFRCTGYAIPLVILICNRKVYQAVRHNKATENKEKKRIIKLLVSITVTFVL CFTPFHVMLLIRCILEHAVNFEDHSNSGKRITYTMYRITVALTSLNVCVADPILYCFVTET GRYDMWNILKFCRGRNTSQRQRKRILSVSTKDTMELEVL
<b>Applications</b>	Enzyme-linked Immunoabsorbent Assay Western Blot (Recombinant protein) Antibody Production

Tel: 1-631-559-9269 1-516-512-3133

Email: [info@creative-biomart.com](mailto:info@creative-biomart.com) Fax: 1-631-938-8127

45-1 Ramsey Road, Shirley, NY 11967, USA

Protein Array

<b>Notes</b>	Best use within three months from the date of receipt of this protein.
<b>Storage</b>	Store at -80 centigrade. Aliquot to avoid repeated freezing and thawing.
<b>Storage Buffer</b>	50 mM Tris-HCl, 10 mM reduced Glutathione, pH=8.0 in the elution buffer.

## GENE INFORMATION

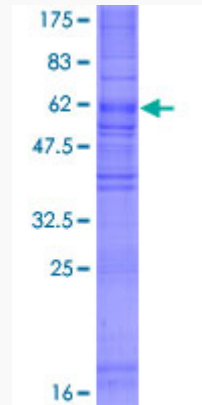
<b>Gene Name</b>	GPR65 G protein-coupled receptor 65 [ Homo sapiens ]
<b>Official Symbol</b>	GPR65
<b>Synonyms</b>	GPR65; G protein-coupled receptor 65; psychosine receptor; hTDAG8; TDAG8; G-protein coupled receptor 65; T-cell death-associated gene 8 protein;
<b>Gene ID</b>	8477
<b>mRNA Refseq</b>	NM_003608
<b>Protein Refseq</b>	NP_003599
<b>MIM</b>	604620
<b>UniProt ID</b>	Q8IYL9

 Tel: 1-631-559-9269 1-516-512-3133

 Email: [info@creative-biomart.com](mailto:info@creative-biomart.com)  Fax: 1-631-938-8127

 45-1 Ramsey Road, Shirley, NY 11967, USA

**Quality Control  
Testing**



12.5% SDS-PAGE Stained with Coomassie Blue.

 Tel: 1-631-559-9269 1-516-512-3133

 Email: [info@creative-biomart.com](mailto:info@creative-biomart.com)  Fax: 1-631-938-8127

 45-1 Ramsey Road, Shirley, NY 11967, USA