

# Recombinant Human GPR65 Full Length Transmembrane protein, His-tagged

Cat. No. GPR65-8271H Lot. No. (See product label)

## SPECIFICATION

<b>Product Overview</b>	Recombinant Human GPR65 protein(Q8IYL9)(1-337aa), fused with N-terminal His tag, was expressed in in vitro E. coli expression system.
<b>Species</b>	Human
<b>Source</b>	E.coli
<b>ProteinLength</b>	1-337aa
<b>Form</b>	If the delivery form is liquid, the default storage buffer is Tris/PBS-based buffer, 5%-50% glycerol. If the delivery form is lyophilized powder, the buffer before lyophilization is Tris/PBS-based buffer, 6% Trehalose, pH 8.0.
<b>Molecular Mass</b>	40.8 kDa
<b>AA Sequence</b>	MNSTCIEEQHDLDDHYLFPVIVYIFVIIVSIPANIGSLCVSFLQAKKESELGIYLFSLSLSDLL YALTLPLWIDYTWNKDNWTFSPALCKGSAFLMYMNFYSSTAFLTCIAVDRYLAVVYP LKFFFLRTRRFALMVSLSIWILETIFNAVMLWEDETVEYCDAEKSNFTLCYDKYPLE KWQINLNLFRCTCTGYAIPLVILICNRKVYQAVRHKNATENKEKKRIIKLLVSITVTFVL CFTPFHVMLLIRCILEHAVNFEDHSNSGKRITYTMYRITVALTSLNVCVADPILYCFVTET GRYDMWNILKFACTGRCNTSQRQRKRILSVSTKDTMELEVL
<b>Purity</b>	Greater than 85% as determined by SDS-PAGE.

 Tel: 1-631-559-9269 1-516-512-3133

 Email: [info@creative-biomart.com](mailto:info@creative-biomart.com)  Fax: 1-631-938-8127

 45-1 Ramsey Road, Shirley, NY 11967, USA

**Storage** Store at -20°C/-80°C upon receipt, aliquoting is necessary for mutiple use. Avoid repeated freeze-thaw cycles.

**Reconstitution** Please reconstitute protein in deionized sterile water to a concentration of 0.1-1.0 mg/mL. We recommend to add 5-50% of glycerol (final concentration) and aliquot for long-term storage at -20°C/-80°C.

## GENE INFORMATION

**Gene Name** GPR65 G protein-coupled receptor 65 [ Homo sapiens ]

**Official Symbol** GPR65

**Synonyms** GPR65; G protein-coupled receptor 65; psychosine receptor; hTDAG8; TDAG8; G-protein coupled receptor 65; T-cell death-associated gene 8 protein;

**Gene ID** 8477

**mRNA Refseq** NM\_003608

**Protein Refseq** NP\_003599

**MIM** 604620

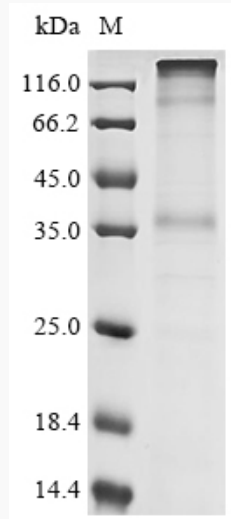
**UniProt ID** Q8IYL9

 Tel: 1-631-559-9269 1-516-512-3133

 Email: [info@creative-biomart.com](mailto:info@creative-biomart.com)  Fax: 1-631-938-8127

 45-1 Ramsey Road, Shirley, NY 11967, USA

**SDS-PAGE**



 Tel: 1-631-559-9269 1-516-512-3133

 Email: [info@creative-biomart.com](mailto:info@creative-biomart.com)  Fax: 1-631-938-8127

 45-1 Ramsey Road, Shirley, NY 11967, USA