

Recombinant Human GPR75 protein(GPR75), His-tagged

Cat. No. GPR75-122H Lot. No. (See product label)

SPECIFICATION

Product Overview	Recombinant Human GPR75 protein(GPR75)(NP_006785.1), fused to His-tag at N-terminus, was expressed in Yeast.
Species	Human
Source	Yeast
ProteinLength	Cytoplasmic Domain
Description	GPR75 is a member of the G protein-coupled receptor family. GPRs are cell surface receptors that activate guanine-nucleotide binding proteins upon the binding of a ligand.
Form	If the delivery form is liquid, the default storage buffer is Tris/PBS-based buffer, 5%-50% glycerol. If the delivery form is lyophilized powder, the buffer before lyophilization is Tris/PBS-based buffer, 6% Trehalose, pH 8.0.
Molecular Mass	20.9kDa
Purity	Greater than 90% as determined by SDS-PAGE.
Notes	Repeated freezing and thawing is not recommended. Store working aliquots at 4°C for up to one week.

 Tel: 1-631-559-9269 1-516-512-3133

 Email: info@creative-biomart.com  Fax: 1-631-938-8127

 45-1 Ramsey Road, Shirley, NY 11967, USA

Storage Store at -20°C upon receipt, aliquoting is necessary for multiple use. Avoid repeated freeze-thaw cycles.

Reconstitution We recommend that this vial be briefly centrifuged prior to opening to bring the contents to the bottom. Please reconstitute protein in deionized sterile water to a concentration of 0.1-1.0 mg/mL. We recommend to add 5-50% of glycerol (final concentration) and aliquot for long-term storage at -20°C/-80°C. Our default final concentration of glycerol is 50%. Customers could use it as reference.

GENE INFORMATION

Gene Name GPR75 G protein-coupled receptor 75 [Homo sapiens (human)]

Official Symbol GPR75

Synonyms G protein coupled receptor 75; GPR chr2; Gpr75; GPR75_HUMAN; GPRchr2; OTTHUMP00000159608; Probable G protein coupled receptor 75; Probable G-protein coupled receptor 75; WI 31133; WI31133

Gene ID 10936

mRNA Refseq NM_006794.4

Protein Refseq NP_006785.1

MIM 606704

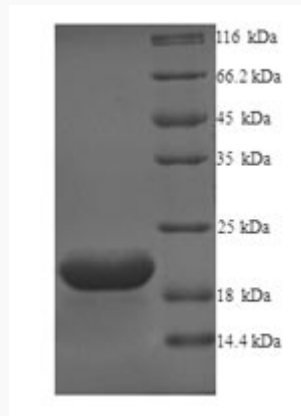
UniProt ID O95800

 Tel: 1-631-559-9269 1-516-512-3133

 Email: info@creative-biomart.com  Fax: 1-631-938-8127

 45-1 Ramsey Road, Shirley, NY 11967, USA

**SDS-PAGE of
GPR75-122H**



 Tel: 1-631-559-9269 1-516-512-3133

 Email: info@creative-biomart.com  Fax: 1-631-938-8127

 45-1 Ramsey Road, Shirley, NY 11967, USA