

## Recombinant Human GPR75 Protein(Met1-Thr46), hFc-tagged

Cat. No. GPR75-40H Lot. No. (See product label)

### SPECIFICATION

<b>Product Overview</b>	Recombinant Human GPR75 Protein(Met1-Thr46)(O95800), fused with C-terminal hFc tag, was expressed in HEK293.
<b>Species</b>	Human
<b>Source</b>	HEK293
<b>ProteinLength</b>	Met1-Thr46
<b>Form</b>	Lyophilized from sterile PBS, pH 7.4. Normally 5 % – 8% trehalose is added as protectants before lyophilization.
<b>Bio-activity</b>	ELISA plate pre-coated by 2 µg/mL (100 µL/well) Human GPR75 Protein, hFc Tag can Anti-GPR75 antibody, IgG1 Chimeric mAb in a linear range of 0.64–16 ng/mL.
<b>Molecular Mass</b>	The protein has a predicted molecular mass of 31.0 kDa after removal of the signal peptide. The apparent molecular mass of GPR75-hFc is approximately 35-55 kDa due to glycosylation.
<b>Purity</b>	The purity of the protein is greater than 95% as determined by SDS-PAGE and Coomassie blue staining.
<b>Storage</b>	Store at -20°C to -80°C for 12 months in lyophilized form. After reconstitution, if not intended for use within a month, aliquot and store at -80°C (Avoid repeated freezing and thawing). Lyophilized proteins are shipped at ambient temperature.

 Tel: 1-631-559-9269 1-516-512-3133

 Email: [info@creative-biomart.com](mailto:info@creative-biomart.com)  Fax: 1-631-938-8127

 45-1 Ramsey Road, Shirley, NY 11967, USA

**Reconstitution** It is recommended that sterile water be added to the vial to prepare a stock solution of 0.2 ug/ul. Centrifuge the vial at 4°C before opening to recover the entire contents.

## GENE INFORMATION

**Gene Name** [GPR75 G protein-coupled receptor 75 \[ Homo sapiens \]](#)

**Official Symbol** [GPR75](#)

**Synonyms** GPR75; G protein-coupled receptor 75; probable G-protein coupled receptor 75; WI31133; GPRchr2; WI31133; MGC132002;

**Gene ID** [10936](#)

**mRNA Refseq** [NM\\_006794](#)

**Protein Refseq** [NP\\_006785](#)

**MIM** [606704](#)

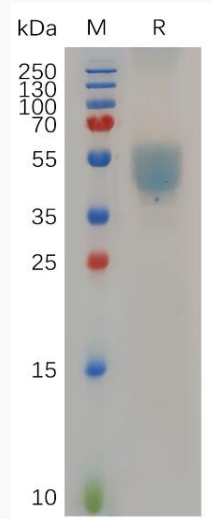
**UniProt ID** [O95800](#)

 Tel: 1-631-559-9269 1-516-512-3133

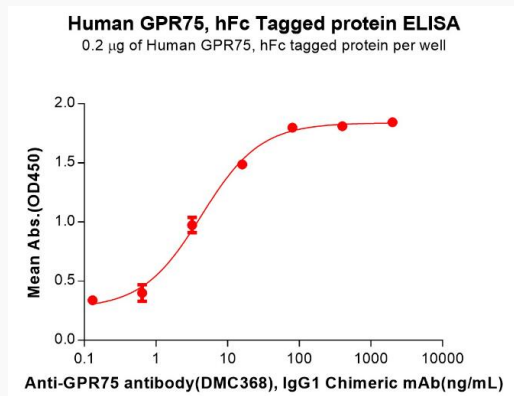
 Email: [info@creative-biomart.com](mailto:info@creative-biomart.com)  Fax: 1-631-938-8127

 45-1 Ramsey Road, Shirley, NY 11967, USA

**SDS-PAGE**



**ELISA**



Tel: 1-631-559-9269 1-516-512-3133

Email: [info@creative-biomart.com](mailto:info@creative-biomart.com) Fax: 1-631-938-8127

45-1 Ramsey Road, Shirley, NY 11967, USA