

Recombinant Human GPR75 Protein(Met1-Thr46), mFc-tagged

Cat. No. GPR75-41H Lot. No. (See product label)

SPECIFICATION

Product Overview	Recombinant Human GPR75 Protein(Met1-Thr46)(O95800), fused with C-terminal mFc tag, was expressed in HEK293.
Species	Human
Source	HEK293
ProteinLength	Met1-Thr46
Form	Lyophilized from sterile PBS, pH 7.4. Normally 5 % - 8% trehalose is added as protectants before lyophilization.
Bio-activity	ELISA plate pre-coated by 2 µg/mL (100 µL/well) Human GPR75 Protein, mFc Tag can bind Anti-GPR75 antibody, IgG1 Chimeric mAb in a linear range of 16–400 ng/mL.
Molecular Mass	The protein has a predicted molecular mass of 31.1 kDa after removal of the signal peptide. The apparent molecular mass of GPR75-mFc is approximately 35-55 kDa due to glycosylation.
Purity	The purity of the protein is greater than 95% as determined by SDS-PAGE and Coomassie blue staining.
Storage	Store at -20°C to -80°C for 12 months in lyophilized form. After reconstitution, if not intended for use within a month, aliquot and store at -80°C (Avoid repeated freezing)

 Tel: 1-631-559-9269 1-516-512-3133

 Email: info@creative-biomart.com  Fax: 1-631-938-8127

 45-1 Ramsey Road, Shirley, NY 11967, USA

and thawing). Lyophilized proteins are shipped at ambient temperature.

Reconstitution

It is recommended that sterile water be added to the vial to prepare a stock solution of 0.2 ug/ul. Centrifuge the vial at 4°C before opening to recover the entire contents.

GENE INFORMATION

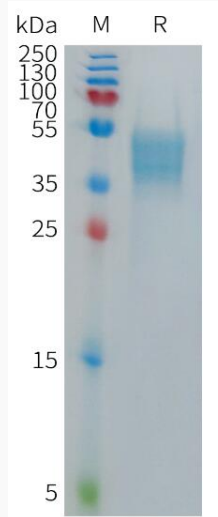
Gene Name	GPR75 G protein-coupled receptor 75 [Homo sapiens]
Official Symbol	GPR75
Synonyms	GPR75; G protein-coupled receptor 75; probable G-protein coupled receptor 75; WI31133; GPRchr2; WI31133; MGC132002;
Gene ID	10936
mRNA Refseq	NM_006794
Protein Refseq	NP_006785
MIM	606704
UniProt ID	O95800

 Tel: 1-631-559-9269 1-516-512-3133

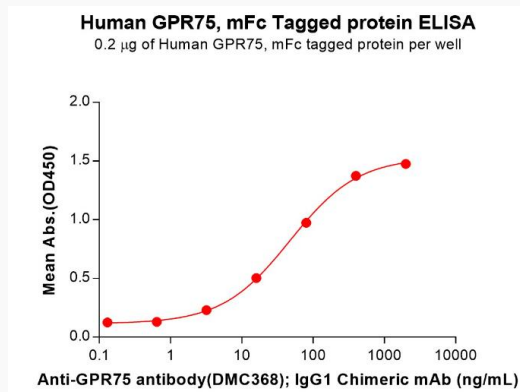
 Email: info@creative-biomart.com  Fax: 1-631-938-8127

 45-1 Ramsey Road, Shirley, NY 11967, USA

SDS-PAGE



ELISA



Tel: 1-631-559-9269 1-516-512-3133

Email: info@creative-biomart.com Fax: 1-631-938-8127

45-1 Ramsey Road, Shirley, NY 11967, USA