

Recombinant Human GPR82 Protein, GST-tagged

Cat. No. GPR82-5270H Lot. No. (See product label)

SPECIFICATION

Product Overview	Human GPR82 partial ORF (NP_543007.1, 237 a.a. - 336 a.a.) recombinant protein with GST tag at N-terminal.
Species	Human
Source	Wheat Germ
ProteinLength	237-336 a.a.
Description	G protein-coupled receptors (GPCRs, or GPRs) contain 7 transmembrane domains and transduce extracellular signals through heterotrimeric G proteins.[supplied by OMIM
Molecular Mass	36.63 kDa
AA Sequence	IMEKDLTYSSVKRHLLVIQILLIVCFLPYSIFKPIFYVLHQRDNCQQLNYLIETKNILTCLASARSSTDPPIIFLLLDKTFKKTLYNLFTKSNSAHMQSYG
Applications	Enzyme-linked Immunoabsorbent Assay Western Blot (Recombinant protein) Antibody Production Protein Array
Notes	Best use within three months from the date of receipt of this protein.

 Tel: 1-631-559-9269 1-516-512-3133

 Email: info@creative-biomart.com  Fax: 1-631-938-8127

 45-1 Ramsey Road, Shirley, NY 11967, USA

Storage Store at -80 centigrade. Aliquot to avoid repeated freezing and thawing.

Storage Buffer 50 mM Tris-HCl, 10 mM reduced Glutathione, pH=8.0 in the elution buffer.

GENE INFORMATION

Gene Name GPR82 G protein-coupled receptor 82 [Homo sapiens]

Official Symbol GPR82

Synonyms GPR82; G protein-coupled receptor 82; probable G-protein coupled receptor 82;

Gene ID 27197

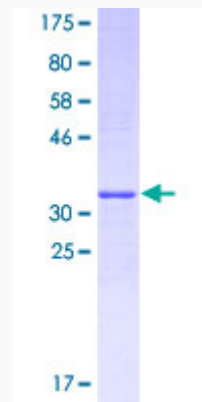
mRNA Refseq NM_080817

Protein Refseq NP_543007

MIM 300748

UniProt ID Q96P67

Quality Control Testing



 Tel: 1-631-559-9269 1-516-512-3133

 Email: info@creative-biomart.com  Fax: 1-631-938-8127

 45-1 Ramsey Road, Shirley, NY 11967, USA



12.5% SDS-PAGE Stained with Coomassie Blue

 Tel: 1-631-559-9269 1-516-512-3133

 Email: info@creative-biomart.com  Fax: 1-631-938-8127

 45-1 Ramsey Road, Shirley, NY 11967, USA