

Recombinant Human GPR85 Protein, GST-tagged

Cat. No. GPR85-5274H Lot. No. (See product label)

SPECIFICATION

Product Overview	Human GPR85 full-length ORF (NP_061843.2, 1 a.a. - 370 a.a.) recombinant protein with GST-tag at N-terminal.
Species	Human
Source	Wheat Germ
Description	Members of the G protein-coupled receptor (GPCR) family, such as GPR85, have a similar structure characterized by 7 transmembrane domains. Activation of GPCRs by extracellular stimuli, such as neurotransmitters, hormones, or light, induces an intracellular signaling cascade mediated by heterotrimeric GTP-binding proteins, or G proteins (Matsumoto et al., 2000 [PubMed 10833454]).[supplied by OMIM
Molecular Mass	68.4 kDa
AA Sequence	MANYSHAADNILQNLSPFLTAFLKLTSLGFIIGVSVVGNLLISILLVKDKTLHRAPYYFLL DLCCSDILRSAICFPFVFNNSVKNGSTWTYGTLTCKVIAFLGVLSCFHTAFMLFCISVTR YLAIHHRFYTKRLTFWTCLAVICMVWTLVAMAFPPVLDVGTYSFIREEDQCAFQH RSFRANDSLGFMLLLALILLATQLVYLKLIFFVHDRRKMKPVQFVAAVSQNWTFHGP GASGQAAANWLAGFGRGPTPPTLLGIRQNANTTGRRLLVLDEFKMEKRISRMFYI MTFLFLTLWGPYLVACYWRVFARGPVVPGGFLTAAVWMSFAQAGINPFVCIFSNRE LRRCFSTLLYCRKSRLPREPYCVI
Applications	Enzyme-linked Immunoabsorbent Assay Western Blot (Recombinant protein)

 Tel: 1-631-559-9269 1-516-512-3133

 Email: info@creative-biomart.com  Fax: 1-631-938-8127

 45-1 Ramsey Road, Shirley, NY 11967, USA



	Antibody Production Protein Array
Notes	Best use within three months from the date of receipt of this protein.
Storage	Store at -80 centigrade. Aliquot to avoid repeated freezing and thawing.
Storage Buffer	50 mM Tris-HCl, 10 mM reduced Glutathione, pH=8.0 in the elution buffer.

GENE INFORMATION

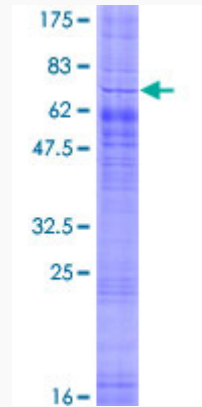
Gene Name	GPR85 G protein-coupled receptor 85 [Homo sapiens]
Official Symbol	GPR85
Synonyms	SREB; SREB2; GPR85; G protein-coupled receptor 85
Gene ID	54329
mRNA Refseq	NM_018970
Protein Refseq	NP_061843
MIM	605188
UniProt ID	P60893

Tel: 1-631-559-9269 1-516-512-3133

Email: info@creative-biomart.com Fax: 1-631-938-8127

45-1 Ramsey Road, Shirley, NY 11967, USA

**Quality Control
Testing**



12.5% SDS-PAGE Stained with Coomassie Blue.

 Tel: 1-631-559-9269 1-516-512-3133

 Email: info@creative-biomart.com  Fax: 1-631-938-8127

 45-1 Ramsey Road, Shirley, NY 11967, USA