

Recombinant Human GPR85 Protein, Myc/DDK-tagged, C13 and N15-labeled

Cat. No. GPR85-6617H Lot. No. (See product label)

SPECIFICATION

Product Overview	GPR85 MS Standard C13 and N15-labeled recombinant protein (NP_061843) with a C-terminal MYC/DDK tag, was expressed in HEK293 cells.
Species	Human
Source	HEK293
Description	Members of the G protein-coupled receptor (GPCR) family, such as GPR85, have a similar structure characterized by 7 transmembrane domains. Activation of GPCRs by extracellular stimuli, such as neurotransmitters, hormones, or light, induces an intracellular signaling cascade mediated by heterotrimeric GTP-binding proteins, or G proteins.
Molecular Mass	42 kDa
AA Sequence	MANYSHAADNILQNLSPFLTAFLKLTSLGFIIGVSVVGNLLISILLVKDKTLHRAPYYFLL DLCCSDILRSAICFPFVFNVSVKNGSTWTYGTLTCKVIAFLGLVLSCFHTAFMLFCISVTR YLAIHHRFYTKRLTFWTCLAVICMVWTLVSVAMAFPPVLDVGTYSFIREEDQCAFQH RSFRANDSLGFMLLLALILLATQLVYLKLIFFVHDRRKMKPVQFVAAVSQNWTFHGP GASGQAAANWLAGFGRGPTPPTLLGIRQNANTTGRRRLLVLDEFKMEKRISRMFYI MTFLFLTLWGPYLVACYWRVVFARGPVVPGGFLTAAVWMSFAQAGINPFVCIFSNRE LRRCFSTLLYCRKSRLPREPYCVITRTRPLEQKLISEEDLAANDILDYKDDDDKV
Purity	> 80% as determined by SDS-PAGE and Coomassie blue staining

 Tel: 1-631-559-9269 1-516-512-3133

 Email: info@creative-biomart.com  Fax: 1-631-938-8127

 45-1 Ramsey Road, Shirley, NY 11967, USA

Stability	Stable for 3 months from receipt of products under proper storage and handling conditions.
Storage	Store at -80 centigrade. Avoid repeated freeze-thaw cycles.
Concentration	50 µg/mL as determined by BCA
Storage Buffer	100 mM glycine, 25 mM Tris-HCl, pH 7.3.

GENE INFORMATION

Gene Name	GPR85 G protein-coupled receptor 85 [Homo sapiens (human)]
Official Symbol	GPR85
Synonyms	GPR85; G protein-coupled receptor 85; SREB; SREB2; probable G-protein coupled receptor 85; seven transmembrane helix receptor; super conserved receptor expressed in brain 2
Gene ID	54329
mRNA Refseq	NM_018970
Protein Refseq	NP_061843
MIM	605188
UniProt ID	P60893

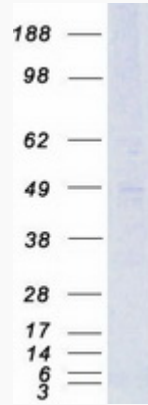
 Tel: 1-631-559-9269 1-516-512-3133

 Email: info@creative-biomart.com  Fax: 1-631-938-8127

 45-1 Ramsey Road, Shirley, NY 11967, USA



SDS-PAGE



Tel: 1-631-559-9269 1-516-512-3133

Email: info@creative-biomart.com Fax: 1-631-938-8127

45-1 Ramsey Road, Shirley, NY 11967, USA