

Recombinant Human GPR89B Protein, GST-tagged

Cat. No. GPR89B-5276H **Lot. No.** (See product label)

SPECIFICATION

Product Overview	Human GPR89 partial ORF (AAH03187, 175 a.a. - 284 a.a.) recombinant protein with GST-tag at N-terminal.
Species	Human
Source	Wheat Germ
Description	GPR89B (G Protein-Coupled Receptor 89B) is a Protein Coding gene. GO annotations related to this gene include signal transducer activity and voltage-gated anion channel activity. An important paralog of this gene is GPR89A.
Molecular Mass	37.84 kDa
AA Sequence	SYFLRNVTDTDILALERRLLQTMDMIISKKKRMAMARRTMFQKGEVHNKPSGFWGMIKSVTTASGSENLTLIQQEVDLEELSRQLFLETADLYATKERIEYSKTFKGG
Applications	Enzyme-linked Immunoabsorbent Assay Western Blot (Recombinant protein) Antibody Production Protein Array
Notes	Best use within three months from the date of receipt of this protein.
Storage	Store at -80 centigrade. Aliquot to avoid repeated freezing and thawing.

 Tel: 1-631-559-9269 1-516-512-3133

 Email: info@creative-biomart.com  Fax: 1-631-938-8127

 45-1 Ramsey Road, Shirley, NY 11967, USA

Storage Buffer 50 mM Tris-HCl, 10 mM reduced Glutathione, pH=8.0 in the elution buffer.

GENE INFORMATION

Gene Name GPR89B G protein-coupled receptor 89B [Homo sapiens]

Official Symbol GPR89B

Synonyms GPR89B; G protein-coupled receptor 89B; UNQ192;

Gene ID 51463

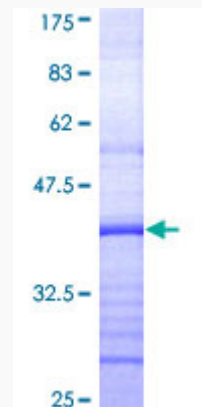
mRNA Refseq NM_001350180

Protein Refseq NP_001337109

MIM 612806

UniProt ID P0CG08

Quality Control Testing



12.5% SDS-PAGE Stained with Coomassie Blue.

 Tel: 1-631-559-9269 1-516-512-3133

 Email: info@creative-biomart.com  Fax: 1-631-938-8127

 45-1 Ramsey Road, Shirley, NY 11967, USA