

Recombinant Human GPR97 protein, His-tagged

Cat. No. GPR97-6113H Lot. No. (See product label)

SPECIFICATION

| | |
|-------------------------|--|
| Product Overview | Recombinant Human GPR97 protein(23-274 aa), fused with N-terminal His tag, was expressed in E.coli. |
| Species | Human |
| Source | E.coli |
| ProteinLength | 23-274 aa |
| Form | The purified protein was lyophilized from sterile phosphate-buffered saline (PBS: 58 mM Na ₂ HPO ₄ , 17 mM NaH ₂ PO ₄ , 68 mM NaCl, pH 7.4). Prior to lyophilization, 5% (w/v) trehalose and 5% (w/v) mannitol were incorporated as cryoprotective excipients. |
| AASequence | KPTEGPRNTCLGSNNMYDIFNLNDKALCFTKCRQSGSDSCNVENLQRYWLNYEAH LMKEGLTQKVNTPFKALVQNLSTNTAEDFYFSLEPSQVPRQVMKDEDKPPDRVRL PKSLFRSLPGNRSVVRLAVTILDIGPGTLFKGPRGLGDGSGVLNNRLVGLSVGQMH VTKLAEPLEIVFSHQRPNNMTLTCVFWDVTKGTTGDWSSEGCSTEVRPEGTVCCC DHLTFFALLLRPTLDQSTVHILTRISQA |
| Purity | 85%, by SDS-PAGE with Coomassie Brilliant Blue staining. |
| Storage | Store at 2-8°C for 1-2 weeks. Aliquot and store at -20°C to -80°C for up to 3 months, reconstitution with sterile water and addition of an equal volume of glycerol. Avoid repeat freeze-thaw cycles. |

 Tel: 1-631-559-9269 1-516-512-3133

 Email: info@creative-biomart.com  Fax: 1-631-938-8127

 45-1 Ramsey Road, Shirley, NY 11967, USA

Reconstitution

Dissolve the product in 200 µl sterile water to achieve a working concentration of 0.25 g/µl. If experimental compatibility allows, mix the aqueous solution with an equal volume of glycerol (1:1 ratio) after initial reconstitution.

GENE INFORMATION

Gene Name GPR97 G protein-coupled receptor 97 [Homo sapiens]

Official Symbol GPR97

Synonyms GPR97; G protein-coupled receptor 97; probable G-protein coupled receptor 97; Pb99; PGR26; G-protein coupled receptor PGR26; PB99;

Gene ID 222487

mRNA Refseq NM_170776

Protein Refseq NP_740746

UniProt ID Q86Y34

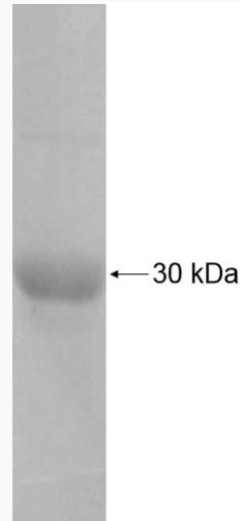
 Tel: 1-631-559-9269 1-516-512-3133

 Email: info@creative-biomart.com  Fax: 1-631-938-8127

 45-1 Ramsey Road, Shirley, NY 11967, USA



SDS-PAGE



Tel: 1-631-559-9269 1-516-512-3133

Email: info@creative-biomart.com Fax: 1-631-938-8127

45-1 Ramsey Road, Shirley, NY 11967, USA