

## Recombinant Human GPRC5D protein, Biotinylated

Cat. No. GPRC5D-0294H Lot. No. (See product label)

### SPECIFICATION

|                          |  |
|--------------------------|--|
| <b>Product Overview</b>  | Biotinylated Recombinant Human GPRC5D protein(Q9NZD1-1)(Met1-Val345) was expressed in HEK293.  |
| <b>Species</b>           | Human  |
| <b>Source</b>            | HEK293   |
| <b>ProteinLength</b>     | Met1-Val345  |
| <b>Tag</b>               | Non  |
| <b>Conjugation/Label</b> | Biotin   |
| <b>Form</b>              | Lyophilized from 0.22µm filtered solution in PBS (pH 7.4). Normally 8% trehalose is added as protectant before lyophilization. Notice: If you need it for immunization, Do Not use any adjuvant. |
| <b>Bio-activity</b>      | Immobilized Anti-GPRC5D Antibody, hFc Tag at 2µg/ml (100µl/well) can bind various dilution ratio of Biotinylated Human GPRC5D VLP.   |
| <b>Molecular Mass</b>    | The protein has a predicted MW of 39.6 kDa.  |
| <b>Endotoxin</b>         | Less than 1EU per µg by the LAL method.  |
| <b>Purity</b>            | > 95% as determined by HPLC  |

 Tel: 1-631-559-9269 1-516-512-3133

 Email: [info@creative-biomart.com](mailto:info@creative-biomart.com)  Fax: 1-631-938-8127

 45-1 Ramsey Road, Shirley, NY 11967, USA

|                       |  |
|-----------------------|--|
| <b>Storage</b>        | Reconstituted protein stable at -80°C for 12 months, 4°C for 1 week. Use a manual defrost freezer and avoid repeated freeze-thaw cycles. |
| <b>Reconstitution</b> | Centrifuge tubes before opening. Redissolve with distilled water to 100µl.   |
| <b>Conjugation</b>    | Biotin   |

## GENE INFORMATION

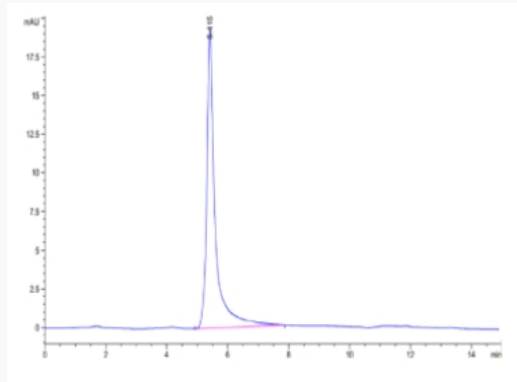
|                        |   |
|------------------------|---|
| <b>Gene Name</b>       | GPRC5D G protein-coupled receptor, family C, group 5, member D [ Homo sapiens ]   |
| <b>Official Symbol</b> | GPRC5D  |
| <b>Synonyms</b>        | GPRC5D; G protein-coupled receptor, family C, group 5, member D; G-protein coupled receptor family C group 5 member D; orphan G-protein coupled receptor; MGC129713; MGC129714; |
| <b>Gene ID</b>         | 55507   |
| <b>mRNA Refseq</b>     | NM_018654   |
| <b>Protein Refseq</b>  | NP_061124   |
| <b>MIM</b>             | 607437  |
| <b>UniProt ID</b>      | Q9NZD1  |

 Tel: 1-631-559-9269 1-516-512-3133

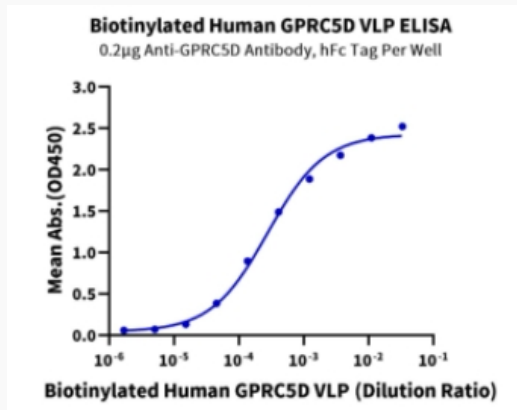
 Email: [info@creative-biomart.com](mailto:info@creative-biomart.com)  Fax: 1-631-938-8127

 45-1 Ramsey Road, Shirley, NY 11967, USA

**Tris-Bis PAGE**



**ELISA Data**



 Tel: 1-631-559-9269 1-516-512-3133

 Email: [info@creative-biomart.com](mailto:info@creative-biomart.com)  Fax: 1-631-938-8127

 45-1 Ramsey Road, Shirley, NY 11967, USA