

Recombinant Human GPRC5D protein(261-345aa), His-tagged

Cat. No. GPRC5D-1399H Lot. No. (See product label)

SPECIFICATION

| | |
|-------------------------|--|
| Product Overview | Recombinant Human GPRC5D protein(Q9NZD1)(261-345aa), fused with N-terminal His tag, was expressed in E.coli. |
| Species | Human |
| Source | E.coli |
| ProteinLength | 261-345aa |
| Form | If the delivery form is liquid, the default storage buffer is Tris/PBS-based buffer, 5%-50% glycerol. If the delivery form is lyophilized powder, the buffer before lyophilization is Tris/PBS-based buffer, 6% Trehalose, pH 8.0. |
| Molecular Mass | 13.4 kDa |
| Purity | Greater than 85% as determined by SDS-PAGE. |
| Storage | Store at -20°C/-80°C upon receipt, aliquoting is necessary for mutiple use. Avoid repeated freeze-thaw cycles. |
| Reconstitution | We recommend that this vial be briefly centrifuged prior to opening to bring the contents to the bottom. Please reconstitute protein in deionized sterile water to a concentration of 0.1-1.0 mg/mL. We recommend to add 5-50% of glycerol (final concentration) and aliquot for long-term storage at -20°C/-80°C. |

 Tel: 1-631-559-9269 1-516-512-3133

 Email: info@creative-biomart.com  Fax: 1-631-938-8127

 45-1 Ramsey Road, Shirley, NY 11967, USA

AA Sequence ELCILYRSCRQECPLQGNACPVTAYQHSFQVENQELSRARDSGDGAEEDVALTSYGT
PIQPQTVDPTQECFIPQAKLSPQQDAGGV

GENE INFORMATION

Gene Name GPRC5D G protein-coupled receptor, family C, group 5, member D [Homo sapiens]

Official Symbol GPRC5D

Synonyms GPRC5D; G protein-coupled receptor, family C, group 5, member D; G-protein coupled receptor family C group 5 member D; orphan G-protein coupled receptor; MGC129713; MGC129714;

Gene ID 55507

mRNA Refseq NM_018654

Protein Refseq NP_061124

MIM 607437

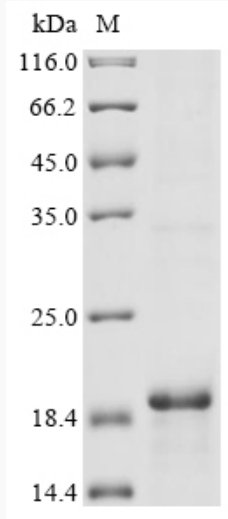
UniProt ID Q9NZD1

 Tel: 1-631-559-9269 1-516-512-3133

 Email: info@creative-biomart.com  Fax: 1-631-938-8127

 45-1 Ramsey Road, Shirley, NY 11967, USA

SDS-PAGE



 Tel: 1-631-559-9269 1-516-512-3133

 Email: info@creative-biomart.com  Fax: 1-631-938-8127

 45-1 Ramsey Road, Shirley, NY 11967, USA