

Recombinant Human GPRC5D Full Length Transmembrane protein(VLPs)

Cat. No. GPRC5D-1941H Lot. No. (See product label)

SPECIFICATION

| | |
|-------------------------|---|
| Product Overview | Recombinant Human GPRC5D Full Length Transmembrane protein(VLPs)(Q9NZD1-1)(Met1-Val345) was expressed in HEK293. |
| Species | Human |
| Source | HEK293 |
| ProteinLength | Met1-Val345 |
| Tag | Non |
| Form | Supplied as 0.22 um filtered solution in PBS, 300 mM L-Arginine (pH 7.4). |
| Bio-activity | Immobilized Human GPRC5D VLP at 5 ug/ml (100 ul/Well) on the plate. Dose response curve for Anti-GPRC5D Antibody, hFc Tag with the EC50 of 3.8 ng/ml determined by ELISA. |
| Molecular Mass | The target protein has a predicted MW of 39.6 kDa. |
| Endotoxin | Less than 1EU per ug by the LAL method. |
| Purity | > 95% as determined by HPLC |
| Storage | Valid for 12 months from date of receipt when stored at -80°C.; Recommend to |

 Tel: 1-631-559-9269 1-516-512-3133

 Email: info@creative-biomart.com  Fax: 1-631-938-8127

 45-1 Ramsey Road, Shirley, NY 11967, USA

aliquot the protein into smaller quantities for optimal storage. Please minimize freeze-thaw cycles.

Reconstitution

It is recommended that sterile water be added to the vial to prepare a stock solution of 0.2 ug/ul. Centrifuge the vial at 4°C before opening to recover the entire contents.

GENE INFORMATION

Gene Name GPRC5D G protein-coupled receptor, family C, group 5, member D [Homo sapiens]

Official Symbol GPRC5D

Synonyms GPRC5D; G protein-coupled receptor, family C, group 5, member D; G-protein coupled receptor family C group 5 member D; orphan G-protein coupled receptor; MGC129713; MGC129714;

Gene ID 55507

mRNA Refseq NM_018654

Protein Refseq NP_061124

MIM 607437

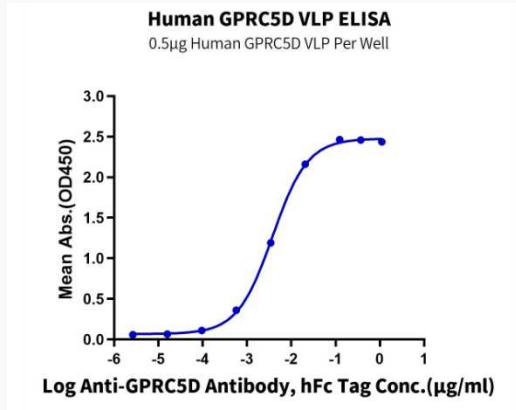
UniProt ID Q9NZD1

 Tel: 1-631-559-9269 1-516-512-3133

 Email: info@creative-biomart.com  Fax: 1-631-938-8127

 45-1 Ramsey Road, Shirley, NY 11967, USA

Activity



 Tel: 1-631-559-9269 1-516-512-3133

 Email: info@creative-biomart.com  Fax: 1-631-938-8127

 45-1 Ramsey Road, Shirley, NY 11967, USA