

Recombinant Human GPRC5D Protein (Met1-Glu27), C-hFc and 6xHis-tagged

Cat. No. GPRC5D-341H Lot. No. (See product label)

SPECIFICATION

Product Overview	Recombinant Human GPRC5D Protein (Met1-Glu27) with C-hFc and 6xHis tag was expressed in HEK293.
Species	Human
Source	HEK293
ProteinLength	Met1-Glu27
Description	The protein encoded by this gene is a member of the G protein-coupled receptor family; however, the specific function of this gene has not yet been determined.
Form	Lyophilized
Molecular Mass	31.5 kDa
Purity	> 95% as determined by SDS-PAGE and Coomassie blue staining.
Storage	Store at -80 centigrade for 12 months (Avoid repeated freezing and thawing)
Storage Buffer	Lyophilized from sterile PBS, pH 7.4. Normally 5 % - 53 % trehalose is added as protectants before lyophilization.

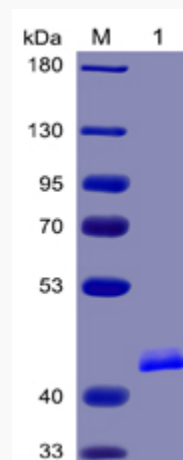
GENE INFORMATION

 Tel: 1-631-559-9269 1-516-512-3133

 Email: info@creative-biomart.com  Fax: 1-631-938-8127

 45-1 Ramsey Road, Shirley, NY 11967, USA

Gene Name	GPRC5D G protein-coupled receptor, family C, group 5, member D [Homo sapiens (human)]
Official Symbol	GPRC5D
Synonyms	GPRC5D; G protein-coupled receptor, family C, group 5, member D; G-protein coupled receptor family C group 5 member D; orphan G-protein coupled receptor; MGC129713; MGC129714;
Gene ID	55507
mRNA Refseq	NM_018654
Protein Refseq	NP_061124
MIM	607437
UniProt ID	Q9NZD1

SDS-PAGE


Tel: 1-631-559-9269 1-516-512-3133

Email: info@creative-biomart.com Fax: 1-631-938-8127

45-1 Ramsey Road, Shirley, NY 11967, USA