

Recombinant Human GPRC5D Full Length Transmembrane protein(Nanodisc), His-tagged

Cat. No. GPRC5D-4280H Lot. No. (See product label)

SPECIFICATION

Product Overview	Recombinant Human GPRC5D Full Length Transmembrane protein(Nanodisc)(Q9NZD1-1)(Met1-Val345), fused with C-terminal His tag, was expressed in HEK293.
Species	Human
Source	HEK293
ProteinLength	Met1-Val345
Tag	C-His
Form	Supplied as 0.22 um filtered solution in PBS (pH 7.4).
Bio-activity	Immobilized Human GPRC5D Nanodisc, His Tag at 2ug/ml (100ul/well) on the plate. Dose response curve for Anti-GPRC5D Antibody, hFc Tag with the EC50 of 4.9ng/ml determined by ELISA. The affinity constant of 1.47 nM as determined in SPR assay (Biacore T200).
Molecular Mass	The protein has a predicted MW of 42.10 kDa.
Endotoxin	Less than 1EU per ug by the LAL method.
Storage	Valid for 12 months from date of receipt when stored at -80°C.; Recommend to

 Tel: 1-631-559-9269 1-516-512-3133

 Email: info@creative-biomart.com  Fax: 1-631-938-8127

 45-1 Ramsey Road, Shirley, NY 11967, USA

aliquot the protein into smaller quantities for optimal storage. Please minimize freeze-thaw cycles.

Reconstitution

It is recommended that sterile water be added to the vial to prepare a stock solution of 0.2 ug/ul. Centrifuge the vial at 4°C before opening to recover the entire contents.

GENE INFORMATION

Gene Name GPRC5D G protein-coupled receptor, family C, group 5, member D [Homo sapiens]

Official Symbol GPRC5D

Synonyms GPRC5D; G protein-coupled receptor, family C, group 5, member D; G-protein coupled receptor family C group 5 member D; orphan G-protein coupled receptor; MGC129713; MGC129714;

Gene ID 55507

mRNA Refseq NM_018654

Protein Refseq NP_061124

MIM 607437

UniProt ID Q9NZD1

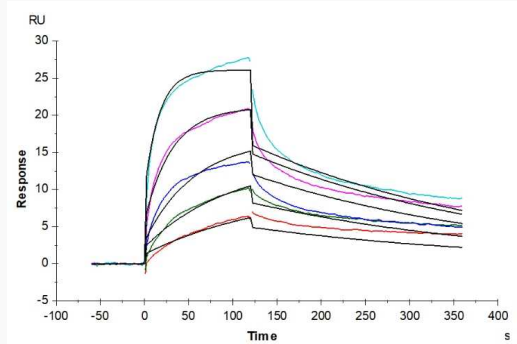
 Tel: 1-631-559-9269 1-516-512-3133

 Email: info@creative-biomart.com  Fax: 1-631-938-8127

 45-1 Ramsey Road, Shirley, NY 11967, USA



Activity



Tel: 1-631-559-9269 1-516-512-3133

Email: info@creative-biomart.com Fax: 1-631-938-8127

45-1 Ramsey Road, Shirley, NY 11967, USA