

## Recombinant Human GPRC5D Protein, GST-tagged

**Cat. No.** GPRC5D-501H    **Lot. No.** (See product label)

### SPECIFICATION

<b>Product Overview</b>	Recombinant Human GPRC5D Protein(NP_061124)(256-345 aa), fused to GST tag, was expressed in E. coli.
<b>Species</b>	Human
<b>Source</b>	E.coli
<b>ProteinLength</b>	256-345 aa
<b>Form</b>	The purified protein was Lyophilized from sterile PBS (58mM Na <sub>2</sub> HPO <sub>4</sub> , 17mM NaH <sub>2</sub> PO <sub>4</sub> , 68mM NaCl, pH8.). 5 % trehalose and 5 % mannitol are added as protectants before lyophilization.
<b>AA Sequence</b>	LYIVPELCILYRSCRQECPLQGNACPVTAYQHSFQVENQELSRARDSGDGAEEDVALT SYGTPIQPQTVDPTECFIPQAKLSPQQDAGGV
<b>Purity</b>	90%, by SDS-PAGE with Coomassie Brilliant Blue staining.
<b>Storage</b>	Store for up to 12 months at -20°C to -80°C as lyophilized powder.
<b>Reconstitution</b>	Reconstitute at 0.25 g/μl in 200 μl sterile water for short-term storage. Reconstitution with 200 μl 50% glycerol solution is recommended for longer term storage (see Stability and Storage for more details). If a different concentration is needed for your purposes please adjust the reconstitution volume as required (please note: the ion concentration of the final

 Tel: 1-631-559-9269    1-516-512-3133

 Email: [info@creative-biomart.com](mailto:info@creative-biomart.com)     Fax: 1-631-938-8127

 45-1 Ramsey Road, Shirley, NY 11967, USA

solution will vary according to the volume used).

Note: Centrifuge vial before opening. When reconstituting, gently pipet and wash down the sides of the vial to ensure full recovery of the protein into solution.

## GENE INFORMATION

<b>Gene Name</b>	GPRC5D G protein-coupled receptor, family C, group 5, member D [ Homo sapiens ]
<b>Official Symbol</b>	GPRC5D
<b>Synonyms</b>	GPRC5D; G protein-coupled receptor, family C, group 5, member D; G-protein coupled receptor family C group 5 member D; orphan G-protein coupled receptor; MGC129713; MGC129714;
<b>Gene ID</b>	55507
<b>mRNA Refseq</b>	NM_018654.1
<b>Protein Refseq</b>	NP_061124
<b>MIM</b>	607437
<b>UniProt ID</b>	Q9NZD1

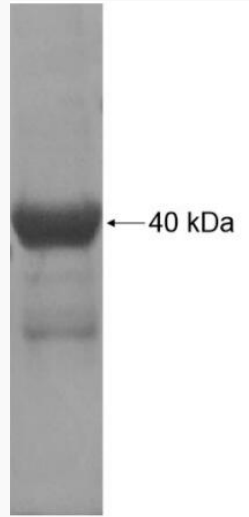
 Tel: 1-631-559-9269 1-516-512-3133

 Email: [info@creative-biomart.com](mailto:info@creative-biomart.com)  Fax: 1-631-938-8127

 45-1 Ramsey Road, Shirley, NY 11967, USA



SDS-PAGE



☎ Tel: 1-631-559-9269 1-516-512-3133

☎ Email: [info@creative-biomart.com](mailto:info@creative-biomart.com) ☎ Fax: 1-631-938-8127

☎ 45-1 Ramsey Road, Shirley, NY 11967, USA