

Recombinant Human GPRC5D Protein, GST-tagged

Cat. No. GPRC5D-5291H Lot. No. (See product label)

SPECIFICATION

Product Overview	Human GPRC5D partial ORF (NP_061124, 261 a.a. - 345 a.a.) recombinant protein with GST-tag at N-terminal.
Species	Human
Source	Wheat Germ
Description	The protein encoded by this gene is a member of the G protein-coupled receptor family; however, the specific function of this gene has not yet been determined. [provided by RefSeq]
Molecular Mass	35.09 kDa
AA Sequence	ELCILYRSCRQECPLQGNACPVTAYQHSFQVENQELSRARDSGDGAEEDVALTSYGT PIQPQTVDPTQECFIPQAKLSPQQDAGGV
Applications	Enzyme-linked Immunoabsorbent Assay Western Blot (Recombinant protein) Antibody Production Protein Array
Notes	Best use within three months from the date of receipt of this protein.
Storage	Store at -80 centigrade. Aliquot to avoid repeated freezing and thawing.

 Tel: 1-631-559-9269 1-516-512-3133

 Email: info@creative-biomart.com  Fax: 1-631-938-8127

 45-1 Ramsey Road, Shirley, NY 11967, USA

Storage Buffer 50 mM Tris-HCl, 10 mM reduced Glutathione, pH=8.0 in the elution buffer.

GENE INFORMATION

Gene Name GPRC5D G protein-coupled receptor, family C, group 5, member D [Homo sapiens]

Official Symbol GPRC5D

Synonyms GPRC5D; G protein-coupled receptor, family C, group 5, member D; G-protein coupled receptor family C group 5 member D; orphan G-protein coupled receptor; MGC129713; MGC129714;

Gene ID 55507

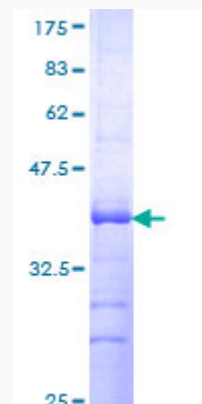
mRNA Refseq NM_018654

Protein Refseq NP_061124

MIM 607437

UniProt ID Q9NZD1

Quality Control Testing



Tel: 1-631-559-9269 1-516-512-3133

Email: info@creative-biomart.com Fax: 1-631-938-8127


45-1 Ramsey Road, Shirley, NY 11967, USA



12.5% SDS-PAGE Stained with Coomassie Blue.

 Tel: 1-631-559-9269 1-516-512-3133

 Email: info@creative-biomart.com  Fax: 1-631-938-8127

 45-1 Ramsey Road, Shirley, NY 11967, USA