

Recombinant Human GPRC5D Full Length Transmembrane protein(VLPs), Biotinylated

Cat. No. GPRC5D-6744H Lot. No. (See product label)

SPECIFICATION

Product Overview	Biotinylated Recombinant Human GPRC5D Full Length Transmembrane protein(VLPs)(Q9NZD1-1)(Met1-Val345) was expressed in HEK293.
Species	Human
Source	HEK293
ProteinLength	Met1-Val345
Tag	Non
Conjugation/Label	Biotin
Form	Supplied as 0.22um filtered solution in PBS, 300mM L-Arginine (pH 7.4).
Bio-activity	Immobilized Anti-GPRC5D Antibody, hFc Tag at 2ug/ml (100ul/well) can bind various dilution ratio of Biotinylated Human GPRC5D VLP. The affinity constant of 0.30 nM as determined in SPR assay (Biacore T200).
Molecular Mass	The target protein has a predicted MW of 39.6 kDa.
Endotoxin	Less than 1EU per ul by the LAL method.
Purity	> 95% as determined by HPLC

 Tel: 1-631-559-9269 1-516-512-3133

 Email: info@creative-biomart.com  Fax: 1-631-938-8127

 45-1 Ramsey Road, Shirley, NY 11967, USA

Storage	Valid for 12 months from date of receipt when stored at -80°C. Recommend to aliquot the protein into smaller quantities for optimal storage. Please minimize freeze-thaw cycles.
Reconstitution	It is recommended that sterile water be added to the vial to prepare a stock solution of 0.2 ug/ul. Centrifuge the vial at 4°C before opening to recover the entire contents.
Conjugation	Biotin

GENE INFORMATION

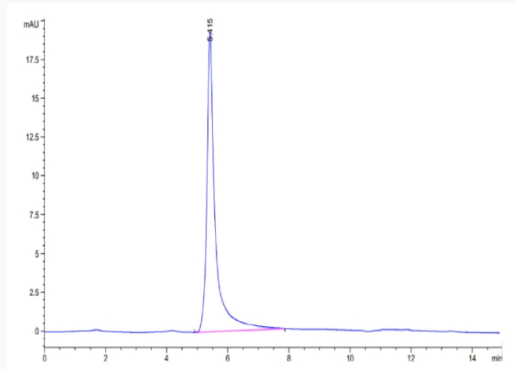
Gene Name	GPRC5D G protein-coupled receptor, family C, group 5, member D [Homo sapiens]
Official Symbol	GPRC5D
Synonyms	GPRC5D; G protein-coupled receptor, family C, group 5, member D; G-protein coupled receptor family C group 5 member D; orphan G-protein coupled receptor; MGC129713; MGC129714;
Gene ID	55507
mRNA Refseq	NM_018654
Protein Refseq	NP_061124
MIM	607437
UniProt ID	Q9NZD1

 Tel: 1-631-559-9269 1-516-512-3133

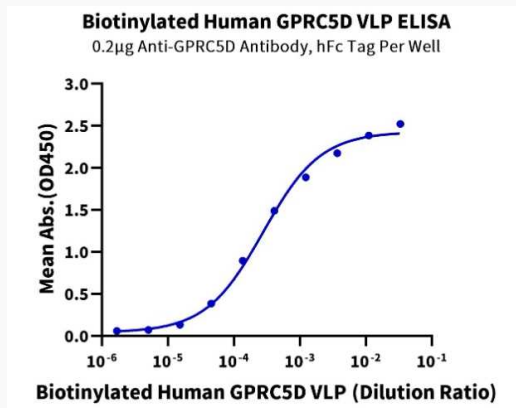
 Email: info@creative-biomart.com  Fax: 1-631-938-8127

 45-1 Ramsey Road, Shirley, NY 11967, USA

SDS-PAGE



Activity



 Tel: 1-631-559-9269 1-516-512-3133

 Email: info@creative-biomart.com  Fax: 1-631-938-8127

 45-1 Ramsey Road, Shirley, NY 11967, USA