

Recombinant Human GPS1 Protein, GST-tagged

Cat. No. GPS1-5294H Lot. No. (See product label)

SPECIFICATION

Product Overview	Human GPS1 full-length ORF (AAH00155, 1 a.a. - 475 a.a.) recombinant protein with GST-tag at N-terminal.
Species	Human
Source	Wheat Germ
Description	This gene is known to suppress G-protein and mitogen-activated signal transduction in mammalian cells. The encoded protein shares significant similarity with Arabidopsis FUS6, which is a regulator of light-mediated signal transduction in plant cells. Two alternatively spliced transcript variants encoding different isoforms have been found for this gene. [provided by RefSeq]
Molecular Mass	77.88 kDa
AA Sequence	<p> MQIDVDPQEDPQNAPDVNYVVENPSLDLEQYAASYSGLMRIERLQFIADHCPTLRVE ALKMALSFVQRTFNVDMYEEIHRKLSEATRSSLRELQNAPDAIPESGVEPPALDTAW VEATRKKALLKLEKLDLTKNYKGNISIKESIRRGHDDLGDHYLDCGDLSNALKCYSR ARDYCTSAKHVINMCLNVIKVSVYLQNWVSHVLSYVSKAESTPEIAEQRGERDSQTQA ILTKLKCAAGLAELAARKYKQAAKCLLLASFDHCDFPELLSPSNVAIYGGLCALATFD RQELQRNVISSSSFKLFLELEPQVRDIIFKFYESKYASCLKMLDEMKNLLLDMYLAP HVRTLYTQIRNRALIQYFSPYVSADMHRMAAAFNTTVAALEDELTLILEGLISARVD SHSKILYARDVDQRSTTFEKSLLMGKEFQRRAKAMMLRAAVLRNQIHVKSPPREGS QGELTPANSQSRMSTNM </p>

 Tel: 1-631-559-9269 1-516-512-3133

 Email: info@creative-biomart.com  Fax: 1-631-938-8127

 45-1 Ramsey Road, Shirley, NY 11967, USA

Applications	Enzyme-linked Immunoabsorbent Assay Western Blot (Recombinant protein) Antibody Production Protein Array
Notes	Best use within three months from the date of receipt of this protein.
Storage	Store at -80 centigrade. Aliquot to avoid repeated freezing and thawing.
Storage Buffer	50 mM Tris-HCl, 10 mM reduced Glutathione, pH=8.0 in the elution buffer.

GENE INFORMATION

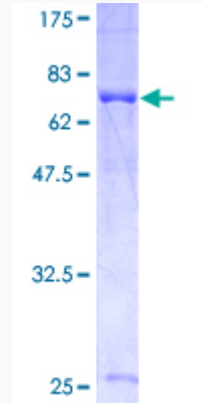
Gene Name	GPS1 G protein pathway suppressor 1 [Homo sapiens]
Official Symbol	GPS1
Synonyms	GPS1; G protein pathway suppressor 1; COP9 signalosome complex subunit 1; COPS1; CSN1; SGN1; GPS-1; signalosome subunit 1; JAB1-containing signalosome subunit 1; MGC71287;
Gene ID	2873
mRNA Refseq	NM_004127
Protein Refseq	NP_004118
MIM	601934
UniProt ID	Q13098

 Tel: 1-631-559-9269 1-516-512-3133

 Email: info@creative-biomart.com  Fax: 1-631-938-8127

 45-1 Ramsey Road, Shirley, NY 11967, USA

**Quality Control
Testing**



12.5% SDS-PAGE Stained with Coomassie Blue.

 Tel: 1-631-559-9269 1-516-512-3133

 Email: info@creative-biomart.com  Fax: 1-631-938-8127

 45-1 Ramsey Road, Shirley, NY 11967, USA