

Recombinant Human GPS1 Protein, Myc/DDK-tagged, C13 and N15-labeled

Cat. No. GPS1-6420H **Lot. No.** (See product label)

SPECIFICATION

Product Overview

GPS1 MS Standard C13 and N15-labeled recombinant protein (NP_997657) with a C-terminal MYC/DDK tag, was expressed in HEK293 cells.

Species

Human

Source

HEK293

Description

This gene is known to suppress G-protein and mitogen-activated signal transduction in mammalian cells. The encoded protein shares significant similarity with Arabidopsis FUS6, which is a regulator of light-mediated signal transduction in plant cells.

Molecular Mass

59.1 kDa

AA Sequence

MRDSSAPSSASSSVTDLYCTPHSSRSDLVLPGTAGDFLSASLSACTLLYEGAVEP
 MQIDVDPQEDPQNAPDVNYVVENPSLDLEQYAASYSGLMRIERLQFIADHCPTLRVE
 ALKMALSFVQRTFNVDMYEEIHRKLSEATRELQNAPDAIPESGVEPPALDTAWVEAT
 RKKALLKLEKLDLTKNYKGNISIKESIRRGHDDLGDHYLDCGDLNALKCYSRARDY
 CTSAKHVINMCLNVIKVSVYLNWVSHVLSYVSKAESTPEIAEQRGERDSQTQAILTKL
 KCAAGLAELAARKYKQAAKCLLLASFDHCDPPELLSPSNVAIYGGLCALATFDRQEL
 QRNVISSSSFKLFLELEPQVRDIIFKIFYESKYASCLKMLDEMKNLLLDMYLAPHVRT
 LYTQIRNRALIQYFSPYVSADMHRMAAAFNTTVAALEDELTLILEGLISARVDSHSKI
 LYARDVDQRSTTFEKSLLMGKEFQRRAKAMMLRAAVLRNQIHVKSPPREGSQGELT
 PANSQSRMSTNMTRTRPLEQKLISEEDLAANDILDYKDDDDKV

 Tel: 1-631-559-9269 1-516-512-3133

 Email: info@creative-biomart.com  Fax: 1-631-938-8127

 45-1 Ramsey Road, Shirley, NY 11967, USA

Purity	> 80% as determined by SDS-PAGE and Coomassie blue staining
Stability	Stable for 3 months from receipt of products under proper storage and handling conditions.
Storage	Store at -80 centigrade. Avoid repeated freeze-thaw cycles.
Concentration	50 µg/mL as determined by BCA
Storage Buffer	100 mM glycine, 25 mM Tris-HCl, pH 7.3.

GENE INFORMATION

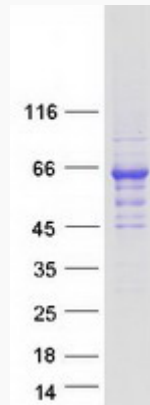
Gene Name	GPS1 G protein pathway suppressor 1 [Homo sapiens (human)]
Official Symbol	GPS1
Synonyms	GPS1; G protein pathway suppressor 1; COP9 signalosome complex subunit 1; COPS1; CSN1; SGN1; GPS-1; signalosome subunit 1; JAB1-containing signalosome subunit 1; MGC71287;
Gene ID	2873
mRNA Refseq	NM_212492
Protein Refseq	NP_997657
MIM	601934
UniProt ID	Q13098

 Tel: 1-631-559-9269 1-516-512-3133

 Email: info@creative-biomart.com  Fax: 1-631-938-8127

 45-1 Ramsey Road, Shirley, NY 11967, USA

SDS-PAGE



 Tel: 1-631-559-9269 1-516-512-3133

 Email: info@creative-biomart.com  Fax: 1-631-938-8127

 45-1 Ramsey Road, Shirley, NY 11967, USA