

Recombinant Human GPSM2 Protein, Myc/DDK-tagged, C13 and N15-labeled

Cat. No. GPSM2-2337H **Lot. No.** (See product label)

SPECIFICATION

Product Overview	GPSM2 MS Standard C13 and N15-labeled recombinant protein (NP_037428) with a C-terminal MYC/DDK tag, was expressed in HEK293 cells.
Species	Human
Source	HEK293
Description	The protein encoded by this gene belongs to a family of proteins that modulate activation of G proteins, which transduce extracellular signals received by cell surface receptors into integrated cellular responses. The N-terminal half of this protein contains 10 copies of leu-gly-asn (LGN) repeat, and the C-terminal half contains 4 GoLoco motifs, which are involved in guanine nucleotide exchange. This protein may play a role in neuroblast division and in the development of normal hearing. Mutations in this gene are associated with autosomal recessive nonsyndromic deafness (DFNB82). Alternative splicing results in multiple transcript variants.
Molecular Mass	75.8 kDa
AA Sequence	MREDHSFHVRYRMEASCLELALALEGERLCKSGDCRAGVSFFEEAAVQVGTEDLKTL SAIYSQLGNAYFYHLHDYAKALEYHHHDLTLARTIGDQLGEAKASGNLGNLTKV LGNFDEAIVCCQRHLDISRELNDKVGEARALYNLGNVYHAKGKSFGCPGPQDV GEFPEEVRDALQAAVDIFYEENLSLVTALGDRAAQGRAFGNLGNTHYLLGNFRDA VIAHEQRLLIAKEFGDKAAERRAYSNLGNAYIFLGEFETASEYYKKTLLLARQLK DRAVEAQSCYSLGN

 Tel: 1-631-559-9269 1-516-512-3133

 Email: info@creative-biomart.com  Fax: 1-631-938-8127

 45-1 Ramsey Road, Shirley, NY 11967, USA

TYTLLQDYEKAIIDYHLKHLAIAQELNDRIGEGRACWSLGNAYTALGNHDQAMHFAEK
HLEISREVGDKSGELTARLNLSDLQMVGLSYSTNNSIMSENTEIDSSLNGVVRPKLG
RRHSMENMELMKLTPEKVQNWSEILAKQKPLIAKPSAKLLFVNRLKGKKYKTNSSST
KVLQDASNSIDHRIPNSQRKISADTIGDEGFFDLLSRFQSNRMDDQRCCLQEKNCHT
ASTTTSSTPPKMMLKTSSVPVSPNTDEFLDLLASSQSRRLDDQRASFSNLPGLRLT
QNSQSVLSHLMTNDNKEADEDFFDILVKCQGSRLDDQRCAPPPATTKGPTVPDEDF
FSLILRSQGKRMDEQRVLLQRDQNRDTRDFGLKDFLQNNALLEFKNSGKKSADHTRT
RPLEQKLISEEDLAANDILDYKDDDDKV

Purity > 80% as determined by SDS-PAGE and Coomassie blue staining

Stability Stable for 3 months from receipt of products under proper storage and handling conditions.

Storage Store at -80 centigrade. Avoid repeated freeze-thaw cycles.

Concentration 50 µg/mL as determined by BCA

Storage Buffer 100 mM glycine, 25 mM Tris-HCl, pH 7.3.

GENE INFORMATION

Gene Name **GPSM2 G-protein signaling modulator 2 [Homo sapiens (human)]**

Official Symbol **GPSM2**

Synonyms GPSM2; G-protein signaling modulator 2; deafness, autosomal recessive 82, DFNB82, G protein signalling modulator 2 (AGS3 like, C. elegans); G-protein-signaling modulator 2; LGN; Pins; mosaic protein LGN; G-protein signalling modulator 2 (AGS3-like, C. elegans); PINS; DFNB82;

 Tel: 1-631-559-9269 1-516-512-3133

 Email: info@creative-biomart.com  Fax: 1-631-938-8127

 45-1 Ramsey Road, Shirley, NY 11967, USA

Gene ID 29899

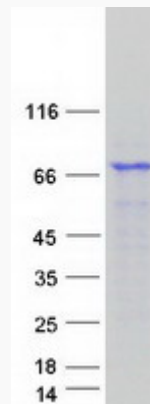
mRNA Refseq NM_013296


Protein Refseq NP_037428

MIM 609245

UniProt ID P81274

SDS-PAGE



 Tel: 1-631-559-9269 1-516-512-3133

 Email: info@creative-biomart.com  Fax: 1-631-938-8127

 45-1 Ramsey Road, Shirley, NY 11967, USA