

Recombinant Human GPSM3 Protein, GST-tagged

Cat. No. GPSM3-5302H Lot. No. (See product label)

SPECIFICATION

Product Overview	Human GPSM3 full-length ORF (AAH18724, 1 a.a. - 160 a.a.) recombinant protein with GST-tag at N-terminal.
Species	Human
Source	Wheat Germ
Description	GPSM3 (G Protein Signaling Modulator 3) is a Protein Coding gene. Diseases associated with GPSM3 include Prostate Leiomyosarcoma and Griscelli Syndrome, Type 1. GO annotations related to this gene include GTPase regulator activity and GDP-dissociation inhibitor activity.
Molecular Mass	43.34 kDa
AA Sequence	MEAERPQEEEDGEQGPPQDEEGWPPPNSTTRPWRSAPPSPPPPGTRHTALGPRS ASLLSLQTELLLDLVAEAQSRRLLEEQRATFYTPQNPSLAPAPLRPLEDREQLYSTIL SHQCQRMEAQRSEPPPLPPGGQELLELLLRVQGGGRMEEQSRPPTHTC
Applications	Enzyme-linked Immunoabsorbent Assay Western Blot (Recombinant protein) Antibody Production Protein Array
Notes	Best use within three months from the date of receipt of this protein.

 Tel: 1-631-559-9269 1-516-512-3133

 Email: info@creative-biomart.com  Fax: 1-631-938-8127

 45-1 Ramsey Road, Shirley, NY 11967, USA

Storage Store at -80 centigrade. Aliquot to avoid repeated freezing and thawing.

Storage Buffer 50 mM Tris-HCl, 10 mM reduced Glutathione, pH=8.0 in the elution buffer.

GENE INFORMATION

Gene Name [GPSM3 G-protein signaling modulator 3 \[Homo sapiens \]](#)

Official Symbol [GPSM3](#)

Synonyms GPSM3; G-protein signaling modulator 3; C6orf9, chromosome 6 open reading frame 9, G protein signalling modulator 3 (AGS3 like, *C. elegans*); G-protein-signaling modulator 3; activator of G protein signaling 4; AGS4; G18; G18.1a; G18.1b; G18.2; NG1; activator of G-protein signaling 4; G-protein signaling modulator 3 (AGS3-like, *C. elegans*); G-protein signalling modulator 3 (AGS3-like, *C. elegans*); C6orf9;

Gene ID [63940](#)

mRNA Refseq [NM_022107](#)

Protein Refseq [NP_071390](#)

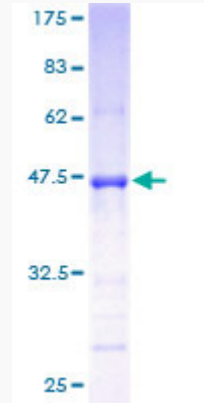
UniProt ID [Q9Y4H4](#)

 Tel: 1-631-559-9269 1-516-512-3133

 Email: info@creative-biomart.com  Fax: 1-631-938-8127

 45-1 Ramsey Road, Shirley, NY 11967, USA

**Quality Control
Testing**



12.5% SDS-PAGE Stained with Coomassie Blue.

 Tel: 1-631-559-9269 1-516-512-3133

 Email: info@creative-biomart.com  Fax: 1-631-938-8127

 45-1 Ramsey Road, Shirley, NY 11967, USA