

## Recombinant Human GPT2 protein(1-523aa), His&Myc-tagged

Cat. No. GPT2-1808H Lot. No. (See product label)

### SPECIFICATION

|                         |  |
|-------------------------|--|
| <b>Product Overview</b> | Recombinant Human GPT2 protein(Q8TD30)(1-523aa), fused with N-terminal His tag and C-terminal Myc tag, was expressed in E.coli.  |
| <b>Species</b>          | Human  |
| <b>Source</b>           | E.coli   |
| <b>ProteinLength</b>    | 1-523aa  |
| <b>Form</b>             | If the delivery form is liquid, the default storage buffer is Tris/PBS-based buffer, 5%-50% glycerol. If the delivery form is lyophilized powder, the buffer before lyophilization is Tris/PBS-based buffer, 6% Trehalose, pH 8.0.   |
| <b>Molecular Mass</b>   | 65.3 kDa   |
| <b>Purity</b>           | Greater than 85% as determined by SDS-PAGE.  |
| <b>Storage</b>          | Store at -20°C/-80°C upon receipt, aliquoting is necessary for mutiple use. Avoid repeated freeze-thaw cycles.   |
| <b>Reconstitution</b>   | We recommend that this vial be briefly centrifuged prior to opening to bring the contents to the bottom. Please reconstitute protein in deionized sterile water to a concentration of 0.1-1.0 mg/mL. We recommend to add 5-50% of glycerol (final concentration) and aliquot for long-term storage at -20°C/-80°C. |

 Tel: 1-631-559-9269 1-516-512-3133

 Email: [info@creative-biomart.com](mailto:info@creative-biomart.com)  Fax: 1-631-938-8127

 45-1 Ramsey Road, Shirley, NY 11967, USA

**AA Sequence**

MQRAAALVRRGCGPRTPSSWGRSQSSAAAEASAVLKVRPERSRRERILTLESMNP  
 QVKAVEYAVRGPVILKAGEIELELQRGIKKPFTEVIRANIGDAQAMGQQPITFLRQVM  
 ALCTYPNLLDSPSPEDAKKRARRILQACGGNSLGSYSASQGVNCIREDVAAAYITRR  
 DGGVPADPDNIYLTGASDGISTILKILVSGGGKSRTGVMIPQYPLYSAVISELDAIQ  
 VNYYLDEENCWALNVNELRRAVQEAKDHCDPKVLCIINPGNPTGQVQSRKCIEDVIH  
 FAWEEKLFLLADEVYQDNVYSPDCRFHSFKKVLVYEMGPEYSSNVELASFHSTSKGY  
 MGECGYRGGYMEVINLHPEIKGQLVKLLSVRLCPPVSGQAAMDIVNPPVAGEESF  
 EQFSREKESVLGNLAKKAKLTEDLFNQVPGIHCNPLQGAMYAFPRIFIPAKAVEAAQ  
 AHQMAPDMFYCMKLEETGICVVPGSGFGQREGTYHFRMTILPPVEKLKTVLQKVK  
 DFHINFLEKYA

## GENE INFORMATION

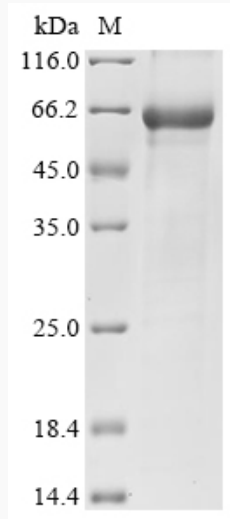
|                        |  |
|------------------------|--|
| <b>Gene Name</b>       | GPT2 glutamic pyruvate transaminase (alanine aminotransferase) 2 [ Homo sapiens ]  |
| <b>Official Symbol</b> | GPT2   |
| <b>Synonyms</b>        | GPT2; glutamic pyruvate transaminase (alanine aminotransferase) 2; alanine aminotransferase 2; ALT2; GPT 2; glutamic--alanine transaminase 2; glutamic--pyruvic transaminase 2; glutamic-pyruvate transaminase 2; glutamate pyruvate transaminase 2; |
| <b>Gene ID</b>         | 84706  |
| <b>mRNA Refseq</b>     | NM_001142466   |
| <b>Protein Refseq</b>  | NP_001135938   |
| <b>MIM</b>             | 138210   |
| <b>UniProt ID</b>      | Q8TD30   |

 Tel: 1-631-559-9269 1-516-512-3133

 Email: [info@creative-biomart.com](mailto:info@creative-biomart.com)  Fax: 1-631-938-8127

 45-1 Ramsey Road, Shirley, NY 11967, USA

**SDS-PAGE**



 Tel: 1-631-559-9269 1-516-512-3133

 Email: [info@creative-biomart.com](mailto:info@creative-biomart.com)  Fax: 1-631-938-8127

 45-1 Ramsey Road, Shirley, NY 11967, USA