

Recombinant Human GPT2 Protein, Myc/DDK-tagged, C13 and N15-labeled

Cat. No. GPT2-4295H **Lot. No.** (See product label)

SPECIFICATION

Product Overview	GPT2 MS Standard C13 and N15-labeled recombinant protein (NP_597700) with a C-terminal MYC/DDK tag, was expressed in HEK293 cells.
Species	Human
Source	HEK293
Description	This gene encodes a mitochondrial alanine transaminase, a pyridoxal enzyme that catalyzes the reversible transamination between alanine and 2-oxoglutarate to generate pyruvate and glutamate. Alanine transaminases play roles in gluconeogenesis and amino acid metabolism in many tissues including skeletal muscle, kidney, and liver. Activating transcription factor 4 upregulates this gene under metabolic stress conditions in hepatocyte cell lines. A loss of function mutation in this gene has been associated with developmental encephalopathy. Alternative splicing results in multiple transcript variants.
Molecular Mass	57.9 kDa
AA Sequence	<p>MQRAAALVRRGCGPRTPSSWGRSQSSAAAEASAVLKVRPERSRRERILTLESMNP QVKAVEYAVRGPVILKAGEIELELQRGIKKPFTEVIRANIGDAQAMGQQPITFLRQVM ALCTYPNLLDSPSPEDAKKRARRILQACGGNSLGSYSASQGVNCIREDVAAAYITRR DGGVPADPDNIYLTGASDGISTILKILVSGGGKSRTGVMIPQYPLYSAVISELDAIQ VNYLDEENCWALNVNELRRAVQEAKDHCDPKVLICIINPGNPTGQVQSRKCIEDVIH</p>

 Tel: 1-631-559-9269 1-516-512-3133

 Email: info@creative-biomart.com  Fax: 1-631-938-8127

 45-1 Ramsey Road, Shirley, NY 11967, USA

FAWEEKLFLLADEVYQDNVYSPDCRFHSFKKVLVYEMGPEYSSNVELASFHSTSKGY
 MGECGYRGGYMEVINLHPEIKGQLVKLLSVRLCPPVSGQAAMDIVNPPVAGEESF
 EQFSREKESVLGNLAKKAKLTEDLFNQVPGIHCNPLQGAMYAFPRIFIPAKAVEAAQ
 AHQMAPDMFYCMKLEETGICVVPVSGFGQREGTYHFRMTILPPVEKLTVLQKVK
 DFHINFLEKYASGPTRTRPLEQKLISEEDLAANDILDYKDDDDKV

Purity > 80% as determined by SDS-PAGE and Coomassie blue staining

Stability Stable for 3 months from receipt of products under proper storage and handling conditions.

Storage Store at -80 centigrade. Avoid repeated freeze-thaw cycles.

Concentration 50 µg/mL as determined by BCA

Storage Buffer 100 mM glycine, 25 mM Tris-HCl, pH 7.3.

GENE INFORMATION

Gene Name [GPT2 glutamic--pyruvic transaminase 2 \[Homo sapiens \(human\) \]](#)

Official Symbol [GPT2](#)

Synonyms GPT2; glutamic pyruvate transaminase (alanine aminotransferase) 2; alanine aminotransferase 2; ALT2; GPT 2; glutamic--alanine transaminase 2; glutamic--pyruvic transaminase 2; glutamic-pyruvate transaminase 2; glutamate pyruvate transaminase 2;

Gene ID [84706](#)

mRNA Refseq [NM_133443](#)

 Tel: 1-631-559-9269 1-516-512-3133

 Email: info@creative-biomart.com  Fax: 1-631-938-8127

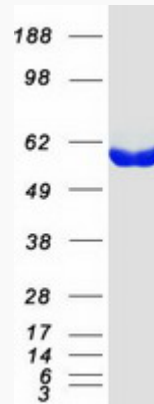
 45-1 Ramsey Road, Shirley, NY 11967, USA

Protein Refseq NP_597700

MIM 138210

UniProt ID Q8TD30

SDS-PAGE



 Tel: 1-631-559-9269 1-516-512-3133

 Email: info@creative-biomart.com  Fax: 1-631-938-8127

 45-1 Ramsey Road, Shirley, NY 11967, USA