

Recombinant Human GPX2 Protein, His-tagged

Cat. No. GPX2-5309H **Lot. No.** (See product label)

SPECIFICATION

Product Overview	Human GPX2 (NP_002074, 1 a.a. - 190 a.a.) full-length recombinant protein with His tag expressed in Escherichia coli.
Species	Human
Source	E.coli
Description	This gene is a member of the glutathione peroxidase family and encodes a selenium-dependent glutathione peroxidase that is one of two isoenzymes responsible for the majority of the glutathione-dependent hydrogen peroxide-reducing activity in the epithelium of the gastrointestinal tract. Studies in knockout mice indicate that mRNA expression levels respond to luminal microflora, suggesting a role of the ileal glutathione peroxidases in preventing inflammation in the GI tract. [provided by RefSeq]
Form	Liquid
Molecular Mass	24.1 kDa
AA Sequence	MGSSHHHHHSSGLVPRGSHMAFIKSFYDLSAISLDGEKVDFNTFRGRAVLIENVA SLCGTTTRDFTQLNELQCRFPRRLVVLGFPCNQFGHQENCQNEEILNSLKYVRPGG GYQPTFTLVQKCEVNGQNEHPVFAYLKDKLPYPYDDPFSLMTDPKLIWSPVRRSDV AWNFEKFLIGPEGEPFRRYSRTFPTINIEPDIKRLKVAI
Purity	> 95% by SDS-PAGE

 Tel: 1-631-559-9269 1-516-512-3133

 Email: info@creative-biomart.com  Fax: 1-631-938-8127

 45-1 Ramsey Road, Shirley, NY 11967, USA

Applications	Functional Study SDS-PAGE
Storage	Store at 4 centigrade for 1-2 weeks. For long term storage store at -20 centigrade or -80 centigrade. Aliquot to avoid repeated freezing and thawing.
Concentration	0.25 mg/mL
Storage Buffer	In 20 mM Tris-HCl, 0.15 M NaCl, pH7.5. (40% glycerol, 1 mM DTT)

GENE INFORMATION

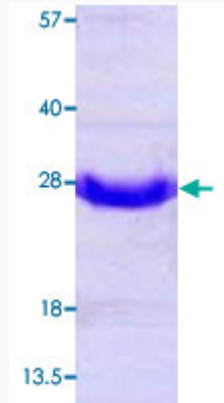
Gene Name	GPX2 glutathione peroxidase 2 (gastrointestinal) [Homo sapiens]
Official Symbol	GPX2
Synonyms	GPX2; glutathione peroxidase 2 (gastrointestinal); glutathione peroxidase 2; GSHPX GI; glutathione peroxidase-gastrointestinal; glutathione peroxidase-related protein 2; gastrointestinal glutathione peroxidase 2; GPRP; GPx-2; GI-GPx; GPRP-2; GPx-GI; GSHPx-2; GSHPX-GI;
Gene ID	2877
mRNA Refseq	NM_002083
Protein Refseq	NP_002074
MIM	138319
UniProt ID	P18283

 Tel: 1-631-559-9269 1-516-512-3133

 Email: info@creative-biomart.com  Fax: 1-631-938-8127

 45-1 Ramsey Road, Shirley, NY 11967, USA

**Quality Control
Testing**



15% SDS-PAGE Stained with Coomassie Blue

 Tel: 1-631-559-9269 1-516-512-3133

 Email: info@creative-biomart.com  Fax: 1-631-938-8127

 45-1 Ramsey Road, Shirley, NY 11967, USA