

Recombinant Human GPX3 Protein (Gln21-Lys225), N-His tagged

Cat. No. GPX3-3060H **Lot. No.** (See product label)

SPECIFICATION

Product Overview	Recombinant human GPX3 (Gln21-Lys225) protein fused with the N-His tag was expressed in E. coli.
Species	Human
Source	E.coli
ProteinLength	Gln21-Lys225
Molecular Mass	25.62 kDa
Purity	>90 % as determined by SDS-PAGE.
Notes	For research use only.
Storage	Use a manual defrost freezer and avoid repeated freeze thaw cycles. Store at 2 to 8 centigrade for one week. Store at -20 to -80 centigrade for twelve months from the date of receipt.
Storage Buffer	0.01M PBS, pH 7.4, 0.02 % NLS
Reconstitution	Reconstitute in sterile water for a stock solution.
Shipping	In general, proteins are provided as lyophilized powder/frozen liquid. They are

 Tel: 1-631-559-9269 1-516-512-3133

 Email: info@creative-biomart.com  Fax: 1-631-938-8127

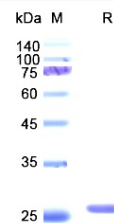
 45-1 Ramsey Road, Shirley, NY 11967, USA

shipped out with dry ice/blue ice unless customers require otherwise.

GENE INFORMATION

Gene Name	GPX3 glutathione peroxidase 3 (plasma) [Homo sapiens (human)]
Official Symbol	GPX3
Synonyms	GPX3; glutathione peroxidase 3 (plasma); glutathione peroxidase 3; GPx-3; plasma glutathione peroxidase; extracellular glutathione peroxidase; GPx-P; GSHPx-3; GSHPx-P;
Gene ID	2878
mRNA Refseq	NM_002084
Protein Refseq	NP_002075
MIM	138321
UniProt ID	P22352

SDS-PAGE



 Tel: 1-631-559-9269 1-516-512-3133

 Email: info@creative-biomart.com  Fax: 1-631-938-8127

 45-1 Ramsey Road, Shirley, NY 11967, USA