

Recombinant Human GPX7 Protein, GST-tagged

Cat. No. GPX7-5314H Lot. No. (See product label)

SPECIFICATION

Product Overview	Human GPX7 full-length ORF (NP_056511.2, 1 a.a. - 187 a.a.) recombinant protein with GST-tag at N-terminal.
Species	Human
Source	Wheat Germ
Description	GPX7 (Glutathione Peroxidase 7) is a Protein Coding gene. Diseases associated with GPX7 include Childhood Kidney Cell Carcinoma. Among its related pathways are Glutathione metabolism and Cellular Senescence. GO annotations related to this gene include oxidoreductase activity and peroxidase activity. An important paralog of this gene is GPX8.
Molecular Mass	47.4 kDa
AA Sequence	MVAATVAAAALLLWAAACAQQEQDFYDFKAVNIRGKLVLSLEKYRGSVSLVNVASE CGFTDQHYRALQQLQRDLGPHHFNVLAFFPCNQFGQQEPDSNKEIESFARRTYSVSF PMFSKIAVTGTGAHPAFKYLAQTSGKEPTWNFWKYLVPDYGKVVGAWDPTVSVEE VRPQITALVRKLILLKREDL
Applications	Enzyme-linked Immunoabsorbent Assay Western Blot (Recombinant protein) Antibody Production Protein Array

 Tel: 1-631-559-9269 1-516-512-3133

 Email: info@creative-biomart.com  Fax: 1-631-938-8127

 45-1 Ramsey Road, Shirley, NY 11967, USA

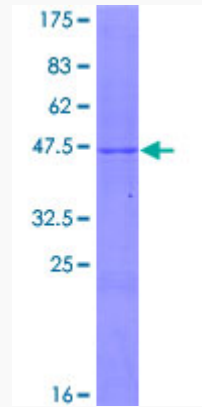
Notes	Best use within three months from the date of receipt of this protein.
Storage	Store at -80 centigrade. Aliquot to avoid repeated freezing and thawing.
Storage Buffer	50 mM Tris-HCl, 10 mM reduced Glutathione, pH=8.0 in the elution buffer.
GENE INFORMATION	
Gene Name	GPX7 glutathione peroxidase 7 [Homo sapiens]
Official Symbol	GPX7
Synonyms	GPX7; glutathione peroxidase 7; FLJ14777; GPX6; NPGPx; glutathione peroxidase 6; non-selenocysteine containing phospholipid hydroperoxide glutathione peroxidase; CL683; GPx-7; GSHPx-7;
Gene ID	2882
mRNA Refseq	NM_015696
Protein Refseq	NP_056511
MIM	615784
UniProt ID	Q96SL4

 Tel: 1-631-559-9269 1-516-512-3133

 Email: info@creative-biomart.com  Fax: 1-631-938-8127

 45-1 Ramsey Road, Shirley, NY 11967, USA

**Quality Control
Testing**



12.5% SDS-PAGE Stained with Coomassie Blue.

 Tel: 1-631-559-9269 1-516-512-3133

 Email: info@creative-biomart.com  Fax: 1-631-938-8127

 45-1 Ramsey Road, Shirley, NY 11967, USA