

Recombinant Human GPX8 Protein, GST-tagged

Cat. No. GPX8-5315H **Lot. No.** (See product label)

SPECIFICATION

Product Overview	Human GPX8 full-length ORF (NP_001008398.1, 1 a.a. - 209 a.a.) recombinant protein with GST-tag at N-terminal.
Species	Human
Source	Wheat Germ
Description	GPX8 (Glutathione Peroxidase 8 (Putative)) is a Protein Coding gene. Among its related pathways are Glutathione metabolism and Cellular Senescence. GO annotations related to this gene include oxidoreductase activity and peroxidase activity. An important paralog of this gene is GPX7.
Molecular Mass	50.3 kDa
AA Sequence	MEPLAAYPLKCSGPRAKVFAVLLSIVLCTVTLFLLQLKFLKPKINSFYAFEVKDAKGRT VSLEKYKGVSLVVNVASDCQLTDRNYLGLKELHKEFGPSHFVLAFFPCNQFGESE PRPSKEVESFARKNYGVTFPIFHKIKILGSEGEPAFRFLVDSSKKEPRWNFWKYLVN PEGQVVKFWRPEEPIEVIRPDIAALVRQVIKKKEDL
Applications	Enzyme-linked Immunoabsorbent Assay Western Blot (Recombinant protein) Antibody Production Protein Array
Notes	Best use within three months from the date of receipt of this protein.

 Tel: 1-631-559-9269 1-516-512-3133

 Email: info@creative-biomart.com  Fax: 1-631-938-8127

 45-1 Ramsey Road, Shirley, NY 11967, USA

Storage Store at -80 centigrade. Aliquot to avoid repeated freezing and thawing.

Storage Buffer 50 mM Tris-HCl, 10 mM reduced Glutathione, pH=8.0 in the elution buffer.

GENE INFORMATION

Gene Name GPX8 glutathione peroxidase 8 (putative) [Homo sapiens]

Official Symbol GPX8

Synonyms GPX8; glutathione peroxidase 8 (putative); probable glutathione peroxidase 8; EPLA847; UNQ847; GPx-8; GSHPx-8;

Gene ID 493869

mRNA Refseq NM_001008397

Protein Refseq NP_001008398

MIM 617172

UniProt ID Q8TED1

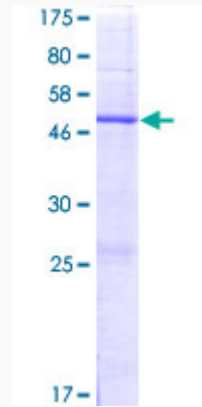
 Tel: 1-631-559-9269 1-516-512-3133

 Email: info@creative-biomart.com  Fax: 1-631-938-8127

 45-1 Ramsey Road, Shirley, NY 11967, USA



**Quality Control
Testing**



12.5% SDS-PAGE Stained with Coomassie Blue.

Tel: 1-631-559-9269 1-516-512-3133

Email: info@creative-biomart.com Fax: 1-631-938-8127

45-1 Ramsey Road, Shirley, NY 11967, USA