

Recombinant Human GRAP Protein, Myc/DDK-tagged, C13 and N15-labeled

Cat. No. GRAP-2969H **Lot. No.** (See product label)

SPECIFICATION

Product Overview

GRAP MS Standard C13 and N15-labeled recombinant protein (NP_006604) with a C-terminal MYC/DDK tag, was expressed in HEK293 cells.

Species

Human

Source

HEK293

Description

This gene encodes a member of the GRB2/Sem5/Drk family and functions as a cytoplasmic signaling protein which contains an SH2 domain flanked by two SH3 domains. The SH2 domain interacts with ligand-activated receptors for stem cell factor and erythropoietin, and facilitates the formation of a stable complex with the BCR-ABL oncoprotein. This protein also associates with the Ras guanine nucleotide exchange factor SOS1 (son of sevenless homolog 1) through its N-terminal SH3 domain. In general, it couples signals from receptor and cytoplasmic tyrosine kinases to the Ras signaling pathway.

Molecular Mass

25.3 kDa

AA Sequence

MESVALYSFQATESDELAFNKGDTLKILNMEDDQNWYKAELRGVEGFIPKNYIRVKP
 HPWYSGRISRQLAEEILMKRNHLGAFLIRESESSPGEFSVSVNYGDQVQHFKVLREA
 SGKYFLWEEKFNLSNELVDFYRTTTIAKKRQIFLRDEEPLLKSPGACFAQAQDFSA
 QDPSQLSFRRGDIIEVLERPDPHWWRGRSCGRVGFPRSYVQPVHLTRTRPLEQKL
 ISEEDLAANDILDYKDDDDKV

 Tel: 1-631-559-9269 1-516-512-3133

 Email: info@creative-biomart.com  Fax: 1-631-938-8127

 45-1 Ramsey Road, Shirley, NY 11967, USA

Purity	> 80% as determined by SDS-PAGE and Coomassie blue staining
Stability	Stable for 3 months from receipt of products under proper storage and handling conditions.
Storage	Store at -80 centigrade. Avoid repeated freeze-thaw cycles.
Concentration	50 µg/mL as determined by BCA
Storage Buffer	100 mM glycine, 25 mM Tris-HCl, pH 7.3.

GENE INFORMATION

Gene Name	GRAP GRB2-related adaptor protein [Homo sapiens (human)]
Official Symbol	GRAP
Synonyms	GRAP; GRB2-related adaptor protein; GRB2-related adapter protein; growth factor receptor-bound protein 2-related adaptor protein; MGC64880;
Gene ID	10750
mRNA Refseq	NM_006613
Protein Refseq	NP_006604
MIM	604330
UniProt ID	Q13588

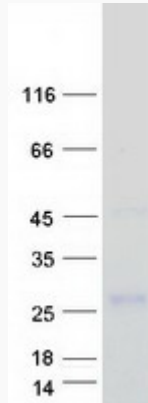
 Tel: 1-631-559-9269 1-516-512-3133

 Email: info@creative-biomart.com  Fax: 1-631-938-8127

 45-1 Ramsey Road, Shirley, NY 11967, USA



SDS-PAGE



Tel: 1-631-559-9269 1-516-512-3133

Email: info@creative-biomart.com Fax: 1-631-938-8127

45-1 Ramsey Road, Shirley, NY 11967, USA