

## Recombinant Human GRAP Protein, GST-tagged

Cat. No. GRAP-5032H Lot. No. (See product label)

### SPECIFICATION

<b>Product Overview</b>	Human GRAP full-length ORF ( NP_006604, 1 a.a. - 217 a.a.) recombinant protein with GST-tag at N-terminal.
<b>Species</b>	Human
<b>Source</b>	Wheat Germ
<b>Description</b>	This gene encodes a member of the GRB2/Sem5/Drk family. This member functions as a cytoplasmic signaling protein which contains an SH2 domain flanked by two SH3 domains. The SH2 domain interacts with ligand-activated receptors for stem cell factor and erythropoietin, and facilitates the formation of a stable complex with the BCR-ABL oncoprotein. This protein also associates with the Ras guanine nucleotide exchange factor SOS1 (son of sevenless homolog 1) through its N-terminal SH3 domain. [provided by RefSeq]
<b>Molecular Mass</b>	49.5 kDa
<b>AA Sequence</b>	MESVALYSFQATESDELAFNKGDTLKILNMEDDQNWYKAELRGVEGFIPKNYIRVKP HPWYSGRISRQLAEEILMKRNHLGAFLIRESESSPGEFSSVSVNYGDQVQHFKVLREA SGKYFLWEEKFNLSNELVDFYRTTTIAKKRQIFLRDEEPLLKSPGACFAQAQDFDSA QDPSQLSFRRGDIEVLERPDPHWWRGRSCGRVGGFFPRSYVQPVHL
<b>Applications</b>	Enzyme-linked Immunoabsorbent Assay Western Blot (Recombinant protein) Antibody Production

 Tel: 1-631-559-9269 1-516-512-3133

 Email: [info@creative-biomart.com](mailto:info@creative-biomart.com)  Fax: 1-631-938-8127

 45-1 Ramsey Road, Shirley, NY 11967, USA

**Protein Array**

<b>Notes</b>	Best use within three months from the date of receipt of this protein.
<b>Storage</b>	Store at -80 centigrade. Aliquot to avoid repeated freezing and thawing.
<b>Storage Buffer</b>	50 mM Tris-HCl, 10 mM reduced Glutathione, pH=8.0 in the elution buffer.

**GENE INFORMATION**

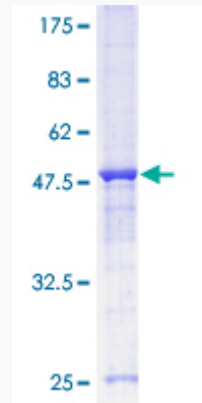
<b>Gene Name</b>	GRAP GRB2-related adaptor protein [ Homo sapiens ]
<b>Official Symbol</b>	GRAP
<b>Synonyms</b>	GRAP; GRB2-related adaptor protein; GRB2-related adapter protein; growth factor receptor-bound protein 2-related adaptor protein; MGC64880;
<b>Gene ID</b>	10750
<b>mRNA Refseq</b>	NM_006613
<b>Protein Refseq</b>	NP_006604
<b>MIM</b>	604330
<b>UniProt ID</b>	Q13588

 Tel: 1-631-559-9269 1-516-512-3133

 Email: [info@creative-biomart.com](mailto:info@creative-biomart.com)  Fax: 1-631-938-8127

 45-1 Ramsey Road, Shirley, NY 11967, USA

**Quality Control  
Testing**



12.5% SDS-PAGE Stained with Coomassie Blue.

 Tel: 1-631-559-9269 1-516-512-3133

 Email: [info@creative-biomart.com](mailto:info@creative-biomart.com)  Fax: 1-631-938-8127

 45-1 Ramsey Road, Shirley, NY 11967, USA