

Recombinant Human GRB10 Protein, Myc/DDK-tagged, C13 and N15-labeled

Cat. No. GRB10-4702H Lot. No. (See product label)

SPECIFICATION

Product Overview	GRB10 MS Standard C13 and N15-labeled recombinant protein (NP_001001550) with a C-terminal MYC/DDK tag, was expressed in HEK293 cells.
Species	Human
Source	HEK293
Description	The product of this gene belongs to a small family of adapter proteins that are known to interact with a number of receptor tyrosine kinases and signaling molecules. This gene encodes a growth factor receptor-binding protein that interacts with insulin receptors and insulin-like growth-factor receptors. Overexpression of some isoforms of the encoded protein inhibits tyrosine kinase activity and results in growth suppression. This gene is imprinted in a highly isoform- and tissue-specific manner, with expression observed from the paternal allele in the brain, and from the maternal allele in the placental trophoblasts. Alternatively spliced transcript variants encoding different isoforms have been identified.
Molecular Mass	60.8 kDa
AA Sequence	MNASLESLSYACSMQSDTVPLLQNGQHARSQPRASGPPRSIQPVSPRQRVQRSQ PVHILAVRRLQEEDQQFRTSSLPAIPNPFPELCGPGSPPVLTGSLPPSQAAAKQDV KVFSEDGTSKVVEILADMTARDLCQLLVYKSHCVDDNSWTLVEHHPHLGLERCLED HELVVQVESTMASESKFLFRKNYAKYEFFKNPMNFFPEQMVTWCQQSNGSQTQLL

 Tel: 1-631-559-9269 1-516-512-3133

 Email: info@creative-biomart.com  Fax: 1-631-938-8127

 45-1 Ramsey Road, Shirley, NY 11967, USA

QNFLNSSSCPEIQGFLHVKELGKKSWKKLYVCLRRSGLYCSTKGTSGEPRHLQLLA
 DLEDSNIFSLIAGRKQYNAPTDHGLCIKPNKVRNETKELRLLCAEDEQTRTCWMTAF
 RLLKYGMMLLYQNYRIPQQRKALLSPFSTPVRVSVENSLVAMDFSGQTGRVIENPAEA
 QSAALEEGHAWRKRSTRMNILGSQSPLHPSTLSTVIHRTQHWFHGRISREESHRIIK
 QQGLVDGLFLLRDSQSNPKAFVLTLCHHQKIKNFQILPCEDDGQTFPSLDDGNTKFS
 DLIQLVDFYQLNKGVLPCCLKHHCIRVALSGPTRTRPLEQKLISEEDLAANDILDYKDD
 DDKV

Purity > 80% as determined by SDS-PAGE and Coomassie blue staining

Stability Stable for 3 months from receipt of products under proper storage and handling conditions.

Storage Store at -80 centigrade. Avoid repeated freeze-thaw cycles.

Concentration 50 µg/mL as determined by BCA

Storage Buffer 100 mM glycine, 25 mM Tris-HCl, pH 7.3.

GENE INFORMATION

Gene Name GRB10 growth factor receptor-bound protein 10 [Homo sapiens (human)]

Official Symbol GRB10

Synonyms GRB10; growth factor receptor-bound protein 10; GRB10 adapter protein; GRB10 adaptor protein; maternally expressed gene 1; insulin receptor-binding protein Grb-IR; RSS; IRBP; MEG1; GRB-IR; Grb-10; KIAA0207;

Gene ID 2887

 Tel: 1-631-559-9269 1-516-512-3133

 Email: info@creative-biomart.com  Fax: 1-631-938-8127

 45-1 Ramsey Road, Shirley, NY 11967, USA

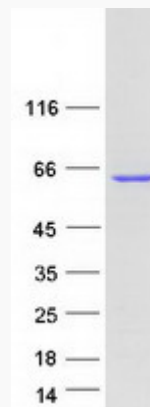
mRNA Refseq [NM_001001550](#)

Protein Refseq [NP_001001550](#)

MIM [601523](#)

UniProt ID [Q13322](#)

SDS-PAGE



 Tel: 1-631-559-9269 1-516-512-3133

 Email: info@creative-biomart.com  Fax: 1-631-938-8127

 45-1 Ramsey Road, Shirley, NY 11967, USA