

## Recombinant Human GRB10 Protein, GST-tagged

Cat. No. GRB10-5035H Lot. No. (See product label)

### SPECIFICATION

**Product Overview** Human GRB10 full-length ORF ( NP\_001001550.1, 1 a.a. - 536 a.a.) recombinant protein with GST-tag at N-terminal.

**Species** Human

**Source** Wheat Germ

**Description** The product of this gene belongs to a small family of adapter proteins that are known to interact with a number of receptor tyrosine kinases and signaling molecules. This gene encodes a growth factor receptor-binding protein that interacts with insulin receptors and insulin-like growth-factor receptors. Overexpression of some isoforms of the encoded protein inhibits tyrosine kinase activity and results in growth suppression. This gene is imprinted in a highly isoform- and tissue-specific manner. Alternatively spliced transcript variants encoding different isoforms have been identified. [provided by RefSeq]

**Molecular Mass** 87.2 kDa

**AA Sequence**  
 MNASLESLSYACSMQSDTVPLLQNGQHARSQPRASGPPRSIQPVSPRQRVQRSQ  
 PVHILAVRRLQEEDQQFRTSSLPAIPNPFPELCGPGSPVLTGSLPPSQAAAKQDV  
 KVFSEDGTSKVVEILADMTARDLCQLLVYKSHCVDDNSWTLVEHHPHLGLERCLED  
 HELVVQVESTMASESKFLFRKNYAKYEFFKNPMNFFPEQMVTWCQQSNGSQTQLL  
 QNFLNSSSCPEIQGFLHVKELGKKSWKLYVCLRRSGLYCSTKGTSTKEPRHLQLLA  
 DLEDSNIFSLIAGRKQYNAPTDHGLCIKPNKVRNETKELRLLCAEDEQTRTCWMTAF

 Tel: 1-631-559-9269 1-516-512-3133

 Email: [info@creative-biomart.com](mailto:info@creative-biomart.com)  Fax: 1-631-938-8127

 45-1 Ramsey Road, Shirley, NY 11967, USA

RLLKYGMMLLYQNYRIPQQRKALLSPFSTPVRSVSENSLVAMDFSGQTGRVIENPAEA  
 QSAALEEGHAWRKRSTRMNILGSQSPLHPSTLSTVIHRTQHWFHGRISREESHRIIK  
 QQGLVDGLFLLRDSQSNPKAFVLTLCHHQKIKNFQILPCEDDGQTTFFSLDDGNTKFS  
 DLIQLVDFYQLNKGVLPCCLKHHCIRVAL

<b>Applications</b>	Enzyme-linked Immunoabsorbent Assay Western Blot (Recombinant protein) Antibody Production Protein Array
<b>Notes</b>	Best use within three months from the date of receipt of this protein.
<b>Storage</b>	Store at -80 centigrade. Aliquot to avoid repeated freezing and thawing.
<b>Storage Buffer</b>	50 mM Tris-HCl, 10 mM reduced Glutathione, pH=8.0 in the elution buffer.

## GENE INFORMATION

<b>Gene Name</b>	GRB10 growth factor receptor-bound protein 10 [ Homo sapiens ]
<b>Official Symbol</b>	GRB10
<b>Synonyms</b>	GRB10; growth factor receptor-bound protein 10; GRB10 adapter protein; GRB10 adaptor protein; maternally expressed gene 1; insulin receptor-binding protein Grb-IR; RSS; IRBP; MEG1; GRB-IR; Grb-10; KIAA0207;
<b>Gene ID</b>	2887
<b>mRNA Refseq</b>	NM_001001549
<b>Protein Refseq</b>	NP_001001549

 Tel: 1-631-559-9269 1-516-512-3133

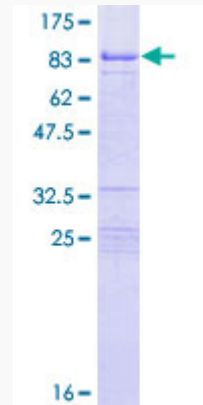
 Email: [info@creative-biomart.com](mailto:info@creative-biomart.com)  Fax: 1-631-938-8127

 45-1 Ramsey Road, Shirley, NY 11967, USA

MIM 601523

UniProt ID Q13322

**Quality Control  
Testing**



12.5% SDS-PAGE Stained with Coomassie Blue.

 Tel: 1-631-559-9269 1-516-512-3133

 Email: [info@creative-biomart.com](mailto:info@creative-biomart.com)  Fax: 1-631-938-8127

 45-1 Ramsey Road, Shirley, NY 11967, USA