

Recombinant Human GRB10 Protein, Myc/DDK-tagged, C13 and N15-labeled

Cat. No. GRB10-5227H Lot. No. (See product label)

SPECIFICATION

Product Overview

GRB10 MS Standard C13 and N15-labeled recombinant protein (NP_001001555) with a C-terminal MYC/DDK tag, was expressed in HEK293 cells.

Species

Human

Source

HEK293

Description

The product of this gene belongs to a small family of adapter proteins that are known to interact with a number of receptor tyrosine kinases and signaling molecules. This gene encodes a growth factor receptor-binding protein that interacts with insulin receptors and insulin-like growth-factor receptors. Overexpression of some isoforms of the encoded protein inhibits tyrosine kinase activity and results in growth suppression. This gene is imprinted in a highly isoform- and tissue-specific manner, with expression observed from the paternal allele in the brain, and from the maternal allele in the placental trophoblasts. Alternatively spliced transcript variants encoding different isoforms have been identified.

Molecular Mass

60.8 kDa

AA Sequence

MNASLESLSYACSMQSDTVPLLQNGQHARSQPRASGPPRSIQPQVSPRQRVQRSQ
 PVHILAVRRLQEEDQQFRTSSLPAIPNPFPELCGPGSPPVLTGSLPPSQAAAKQDV
 KVFSEDGTSKVVEILADMTARDLCQLLVYKSHCVDDNSWTLVEHHPHLGLERCLED
 HELVVQVESTMASESKFLFRKNYAKYEFFKNPMNFFPEQMVTWCQQSNGSQTQLL

 Tel: 1-631-559-9269 1-516-512-3133

 Email: info@creative-biomart.com  Fax: 1-631-938-8127

 45-1 Ramsey Road, Shirley, NY 11967, USA



QNFLNSSSCPEIQGFLHVKELGKKSWKKLYVCLRRSGLYCSTKGTSGEPRHLQLLA
 DLEDSNIFSLIAGRKQYNAPTDHGLCIKPNKVRNETKELRLLCAEDEQTRTCWMTAF
 RLLKYGMLLYQNYRIPQQRKALLSPFSTPVRVSVENSLVAMDFSGQTGRVIENPAEA
 QSAALEEGHAWRKRSTRMNILGSQSPLHPSTLSTVIHRTQHWFHGRISREESHRIIK
 QQGLVDGLFLLRDSQSNPKAFVLTLCHHQKIKNFQILPCEDDGQTFPSLDDGNTKFS
 DLIQLVDFYQLNKGVLPCCLKHHCIRVALSGPTRTRPLEQKLISEEDLAANDILDYKDD
 DDKV

Purity	> 80% as determined by SDS-PAGE and Coomassie blue staining
Stability	Stable for 3 months from receipt of products under proper storage and handling conditions.
Storage	Store at -80 centigrade. Avoid repeated freeze-thaw cycles.
Concentration	50 µg/mL as determined by BCA
Storage Buffer	100 mM glycine, 25 mM Tris-HCl, pH 7.3.

GENE INFORMATION

Gene Name	GRB10 growth factor receptor-bound protein 10 [Homo sapiens (human)]
Official Symbol	GRB10
Synonyms	GRB10; growth factor receptor-bound protein 10; GRB10 adapter protein; GRB10 adaptor protein; maternally expressed gene 1; insulin receptor-binding protein Grb-IR; RSS; IRBP; MEG1; GRB-IR; Grb-10; KIAA0207;
Gene ID	2887

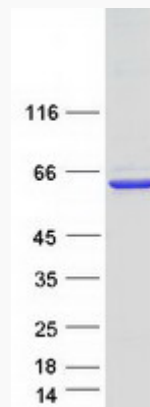
mRNA Refseq [NM_001001555](#)

Protein Refseq [NP_001001555](#)

MIM [601523](#)

UniProt ID [Q13322](#)

SDS-PAGE



 Tel: 1-631-559-9269 1-516-512-3133

 Email: info@creative-biomart.com  Fax: 1-631-938-8127

 45-1 Ramsey Road, Shirley, NY 11967, USA