

Recombinant Human GRB2 Protein, His-GST-tagged

Cat. No. GRB2-001H Lot. No. (See product label)

SPECIFICATION

Product Overview	Recombinant Human GRB2 Protein (1-217 aa (full-length)) with 6xHis-GST tags was expressed in E. coli.
Species	Human
Source	E.coli
ProteinLength	1-217
Description	The protein encoded by this gene binds the epidermal growth factor receptor and contains one SH2 domain and two SH3 domains. Its two SH3 domains direct complex formation with proline-rich regions of other proteins, and its SH2 domain binds tyrosine phosphorylated sequences. This gene is similar to the Sem5 gene of C.elegans, which is involved in the signal transduction pathway. Two alternatively spliced transcript variants encoding different isoforms have been found for this gene.
Molecular Mass	54.1 kDa
Purity	>95% confirmed by 10% SDS-PAGE stained with Coomassie Blue (CB), immunoblotting with anti-6xHis (WB).
Applications	ELISA, Western Blot, Antibody Production, Protein array
Quality Control Test	10% SDS-PAGE stained with Coomassie Blue (CB), immunoblotting with anti-GST monoclonal and peptide fingerprinting by MALDI-TOF mass spectrometry.

 Tel: 1-631-559-9269 1-516-512-3133

 Email: info@creative-biomart.com  Fax: 1-631-938-8127

 45-1 Ramsey Road, Shirley, NY 11967, USA

Storage	Store working aliquots at 4 centigrade for up to one week. For extended storage, conserve at -80 centigrade.
Expiry	12 months from the date of purchase, if it is properly stored.
Storage Buffer	Phosphate-Buffered Saline (PBS), pH 7.4. No preservatives added.
Shipping	Dry Ice

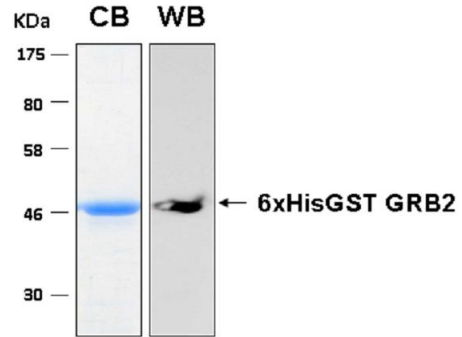
GENE INFORMATION

Gene Name	GRB2 growth factor receptor bound protein 2 [Homo sapiens (human)]
Official Symbol	GRB2
Synonyms	GRB2; growth factor receptor bound protein 2; ASH; Grb3-3; MST084; NCKAP2; MSTP084; EGFRBP-GRB2; growth factor receptor-bound protein 2; HT027; SH2/SH3 adapter; GRB2; abundant SRC homology; epidermal growth factor receptor-binding protein GRB2; epididymis secretory sperm binding protein; growth factor receptor-bound protein 3; protein Ash
Gene ID	2885
mRNA Refseq	NM_002086
Protein Refseq	NP_002077
MIM	108355
UniProt ID	P62993

 Tel: 1-631-559-9269 1-516-512-3133

 Email: info@creative-biomart.com  Fax: 1-631-938-8127

 45-1 Ramsey Road, Shirley, NY 11967, USA



Tel: 1-631-559-9269 1-516-512-3133

Email: info@creative-biomart.com Fax: 1-631-938-8127

45-1 Ramsey Road, Shirley, NY 11967, USA