

Recombinant Full Length Human GRB2 Protein, C-Flag-tagged

Cat. No. GRB2-1171HFL **Lot. No.** (See product label)

SPECIFICATION

Product Overview	Recombinant Full Length Human GRB2 Protein, fused to Flag-tag at C-terminus, was expressed in Mammalian cells.
Species	Human
Source	Mammalian Cells
Description	The protein encoded by this gene binds the epidermal growth factor receptor and contains one SH2 domain and two SH3 domains. Its two SH3 domains direct complex formation with proline-rich regions of other proteins, and its SH2 domain binds tyrosine phosphorylated sequences. This gene is similar to the Sem5 gene of C.elegans, which is involved in the signal transduction pathway. Two alternatively spliced transcript variants encoding different isoforms have been found for this gene.
Form	25 mM Tris HCl, pH 7.3, 100 mM glycine, 10% glycerol.
Molecular Mass	25 kDa
AA Sequence	MEAIKYDFKATADDELSFKRGDILKVLNEECDQNWYKAELNGKDGFIKPNYIEMKP HPWFFGKIPRAKA EEMLSKQRHDGAFLIRESESAPGDFSLSVKFGNDVQHFKVLRD GAGKYFLWVVKFNSLNELVDYHRSTSV SRNQQIFLRDIEQVPQQPTYVQALFDFDP QEDGELGFRRGDFIHVMDNSDPNWWKGACHGQTGMFPRNYV TPVNRNVTRTRPLEQKLISEEDLAANDILDYKDDDDKV
Purity	> 80% as determined by SDS-PAGE and Coomassie blue staining.

 Tel: 1-631-559-9269 1-516-512-3133

 Email: info@creative-biomart.com  Fax: 1-631-938-8127

 45-1 Ramsey Road, Shirley, NY 11967, USA

Stability	Stable for 12 months from the date of receipt of the product under proper storage and handling conditions. Avoid repeated freeze-thaw cycles.
Storage	Store at -80 centigrade.
Concentration	>50 ug/mL as determined by microplate BCA method.
Preparation	Recombinant protein was captured through anti-DDK affinity column followed by conventional chromatography steps.
Protein Families	Druggable Genome
Protein Pathways	Acute myeloid leukemia, B cell receptor signaling pathway, Chemokine signaling pathway, Chronic myeloid leukemia, Colorectal cancer, Dorso-ventral axis formation, Endometrial cancer, ErbB signaling pathway, Fc epsilon RI signaling pathway, Focal adhesion, Gap junction, Glioma, GnRH signaling pathway, Insulin signaling pathway, Jak-STAT signaling pathway, MAPK signaling pathway, Natural killer cell mediated cytotoxicity, Neurotrophin signaling pathway, Non-small cell lung cancer, Pathways in cancer, Prostate cancer, Renal cell carcinoma, T cell receptor signaling pathway
Full Length	Full L.
GENE INFORMATION	
Gene Name	GRB2 growth factor receptor bound protein 2 [Homo sapiens (human)]
Official Symbol	GRB2
Synonyms	ASH; Grb3-3; MST084; NCKAP2; MSTP084; EGFRBP-GRB2
Gene ID	2885

 Tel: 1-631-559-9269 1-516-512-3133

 Email: info@creative-biomart.com  Fax: 1-631-938-8127

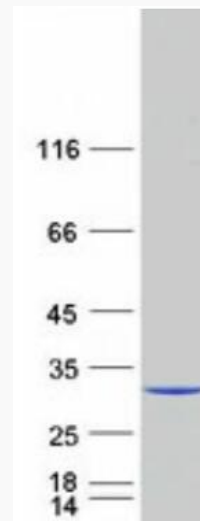
 45-1 Ramsey Road, Shirley, NY 11967, USA

mRNA Refseq [NM_002086.5](#)

Protein Refseq [NP_002077.1](#)

MIM [108355](#)

UniProt ID [P62993](#)



Coomassie blue staining of purified GRB2 protein.

 Tel: 1-631-559-9269 1-516-512-3133

 Email: info@creative-biomart.com  Fax: 1-631-938-8127

 45-1 Ramsey Road, Shirley, NY 11967, USA