

## Recombinant Human GRB2 protein, His-tagged

Cat. No. GRB2-1997H Lot. No. (See product label)

### SPECIFICATION

<b>Product Overview</b>	Recombinant Human GRB2protein(P62993)(232aa), fused with N-terminal His tag, was expressed in E. coli.
<b>Species</b>	Human
<b>Source</b>	E.coli
<b>ProteinLength</b>	232aa(including fusion tag)
<b>Tag</b>	N-His
<b>Form</b>	20mM Tris.Cl, 50mM NaCl, 50% Glycerol, pH8.0.
<b>Molecular Mass</b>	27.1kDa(including fusion tag)
<b>Storage</b>	Store at -80°C and avoid repeated freeze-thaw cycles.
<b>Reconstitution</b>	It is recommended that sterile water be added to the vial to prepare a stock solution of 0.2 ug/ul. Centrifuge the vial at 4°C before opening to recover the entire contents.

### GENE INFORMATION

<b>Gene Name</b>	GRB2 growth factor receptor-bound protein 2 [ Homo sapiens ]
<b>Official Symbol</b>	GRB2

 Tel: 1-631-559-9269 1-516-512-3133

 Email: [info@creative-biomart.com](mailto:info@creative-biomart.com)  Fax: 1-631-938-8127

 45-1 Ramsey Road, Shirley, NY 11967, USA

**Synonyms** GRB2; growth factor receptor-bound protein 2; NCKAP2; HT027; protein Ash; SH2/S3 adapter GRB2; abundant SRC homology; growth factor receptor-bound protein 3; epidermal growth factor receptor-binding protein GRB2; ASH; Grb3-3; MST084; MSTP084; EGFRBP-GRB2;

**Gene ID** [2885](#)

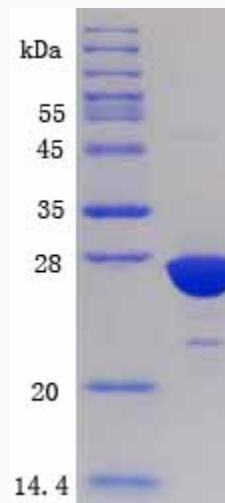
**mRNA Refseq** [NM\\_002086](#)

**Protein Refseq** [NP\\_002077](#)

**MIM** [108355](#)

**UniProt ID** [P62993](#)

**SDS-PAGE**



 Tel: 1-631-559-9269 1-516-512-3133

 Email: [info@creative-biomart.com](mailto:info@creative-biomart.com)  Fax: 1-631-938-8127

 45-1 Ramsey Road, Shirley, NY 11967, USA