

Recombinant Human GRB2 Protein (Met1-Val217), C-His tagged

Cat. No. GRB2-3062H Lot. No. (See product label)

SPECIFICATION

Product Overview	Recombinant human GRB2 (Met1-Val217) protein fused with the C-terminal His tag was expressed in E. coli.
Species	Human
Source	E.coli
ProteinLength	Met1-Val217
Molecular Mass	23.87 kDa
Purity	>90 % as determined by SDS-PAGE.
Notes	For research use only.
Storage	Use a manual defrost freezer and avoid repeated freeze thaw cycles. Store at 2 to 8 centigrade for one week. Store at -20 to -80 centigrade for twelve months from the date of receipt.
Storage Buffer	Supplied as solution form in PBS or lyophilized from PBS.
Reconstitution	Reconstitute in sterile water for a stock solution.
Shipping	In general, proteins are provided as lyophilized powder/frozen liquid. They are

 Tel: 1-631-559-9269 1-516-512-3133

 Email: info@creative-biomart.com  Fax: 1-631-938-8127

 45-1 Ramsey Road, Shirley, NY 11967, USA

shipped out with dry ice/blue ice unless customers require otherwise.

GENE INFORMATION

Gene Name GRB2 growth factor receptor-bound protein 2 [Homo sapiens (human)]

Official Symbol GRB2

Synonyms GRB2; growth factor receptor-bound protein 2; NCKAP2; HT027; protein Ash; SH2/SH3 adapter GRB2; abundant SRC homology; growth factor receptor-bound protein 3; epidermal growth factor receptor-binding protein GRB2; ASH; Grb3-3; MST084; MSTP084; EGFRBP-GRB2;

Gene ID 2885

mRNA Refseq NM_002086

Protein Refseq NP_002077

MIM 108355

UniProt ID P62993

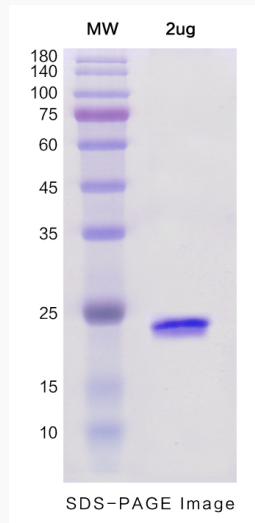
 Tel: 1-631-559-9269 1-516-512-3133

 Email: info@creative-biomart.com  Fax: 1-631-938-8127

 45-1 Ramsey Road, Shirley, NY 11967, USA



SDS-PAGE



Tel: 1-631-559-9269 1-516-512-3133

Email: info@creative-biomart.com Fax: 1-631-938-8127

45-1 Ramsey Road, Shirley, NY 11967, USA