

Recombinant Human GRHL2 Protein, GST-tagged

Cat. No. GRHL2-5326H Lot. No. (See product label)

SPECIFICATION

Product Overview	Human GRHL2 full-length ORF (NP_079191.1, 1 a.a. - 625 a.a.) recombinant protein with GST-tag at N-terminal.
Species	Human
Source	Wheat Germ
Description	The protein encoded by this gene is a transcription factor that can act as a homodimer or as a heterodimer with either GRHL1 or GRHL3. Defects in this gene are a cause of non-syndromic sensorineural deafness autosomal dominant type 28 (DFNA28)
Molecular Mass	97.5 kDa
AA Sequence	MSQESDNNKRLVALVPMPDPPFNTRRAYTSEDEAWKSYLENPLTAATKAMMSING DED SAAALGLLYDYK VPRDKRLLSVSKASDSQEDQEKRNCLGTSEAQSNLSGGEN RVQVLKTVPVNLSLNQDHLNSKREQYSISFPSSAIIIPVSGITVVKAEDFTPVFMAP PVHYPRGDGEEQRVVIFEQTQYDVPSLATHSAYLKDDQRSTPDSTYSESFKDAATE KFRSASVGAEEYMYDQTSSGTFQYTLKSLRQKQEGPMTYLNKGQFYAITLSE TGDNKCFRHPISKVRSVVMVVFSEDKNRDEQLKYWKYWHSRQHTAKQRVLDIADY KESFNTIGNIEEIIAYNAVSTWDVN EEA KIFITVNCLSTDFSSQKGVKGLPLMIQIDTYS YNNRSNKPIHRAYCQIKVFCDKGAERKIRDEERKQNRKKKGKQASQTQCNSSSDG KLAAIPLQKKSDITYFKTMPDLHSQPVLVDFIPDVHFANLQRTGQVYYNTDDEREGGSVL VKRMFRPMEEFPGVPSKQMKEEGTKRVLLYVRKETDDVFDALMLKSPTVKGLME

 Tel: 1-631-559-9269 1-516-512-3133

 Email: info@creative-biomart.com  Fax: 1-631-938-8127

 45-1 Ramsey Road, Shirley, NY 11967, USA

AISEKYGLPVEKIAKLYKSKKGGILVNMDNIIHYSNEDTFILNMESMVEGFKVTLMEI

Applications

Enzyme-linked Immunoabsorbent Assay
 Western Blot (Recombinant protein)
 Antibody Production
 Protein Array

Notes

Best use within three months from the date of receipt of this protein.

Storage

Store at -80 centigrade. Aliquot to avoid repeated freezing and thawing.

Storage Buffer

50 mM Tris-HCl, 10 mM reduced Glutathione, pH=8.0 in the elution buffer.

GENE INFORMATION

Gene Name

GRHL2 grainyhead-like 2 (Drosophila) [Homo sapiens]

Official Symbol

GRHL2

Synonyms

GRHL2; grainyhead-like 2 (Drosophila); deafness, autosomal dominant 28, DFNA28, TFCP2L3, transcription factor CP2 like 3; grainyhead-like protein 2 homolog; BOM; FLJ13782; brother of mammalian grainyhead; transcription factor CP2-like 3; DFNA28; TFCP2L3; FLJ11172; MGC149294; MGC149295;

Gene ID

79977

mRNA Refseq

NM_024915

Protein Refseq

NP_079191

MIM

608576

 Tel: 1-631-559-9269 1-516-512-3133

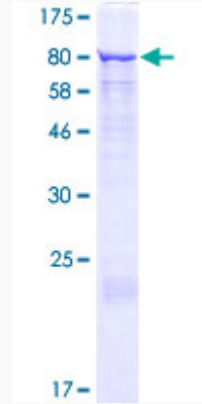
 Email: info@creative-biomart.com  Fax: 1-631-938-8127

 45-1 Ramsey Road, Shirley, NY 11967, USA

UniProt ID

Q6ISB3

Quality Control
Testing



12.5% SDS-PAGE Stained with Coomassie Blue.

 Tel: 1-631-559-9269 1-516-512-3133

 Email: info@creative-biomart.com  Fax: 1-631-938-8127

 45-1 Ramsey Road, Shirley, NY 11967, USA