

Recombinant Human GRHL3 Protein, Myc/DDK-tagged, C13 and N15-labeled

Cat. No. GRHL3-5221H Lot. No. (See product label)

SPECIFICATION

Product Overview

GRHL3 MS Standard C13 and N15-labeled recombinant protein (NP_937817) with a C-terminal MYC/DDK tag, was expressed in HEK293 cells.

Species

Human

Source

HEK293

Description

This gene encodes a member of the grainyhead family of transcription factors. The encoded protein may function as a transcription factor during development, and has been shown to stimulate migration of endothelial cells. Multiple transcript variants encoding distinct isoforms have been identified for this gene.

Molecular Mass

62.2 kDa

AA Sequence

MRVNGDDDSVAALSFLYDYMGPKKEKRILSSSTGGRNDQGKRYYHGMEYETDLTP
 LESPTHLMKFLTENVSGTPEYPDLLKKNLMSLEGALPTPGKAAPLPAGPSKLEAGS
 VDSYLLPTTDMYDNGSLNSLFESIHGVPPTQRWQPDSTFKDDPQESMLFPDILKTSP
 EPPCPEDYPSLKSDFEYTLGSPKAIHIKSGESPMAYLNKGQFYVTLRTPAGGKGLA
 LSSNKVKSVMVVFNEKVPVEQLRFWKHWHSRQPTAKQRVIDVADCKENFNTVE
 HIEEVAYNALSFWNVNNEAKVFIGVNCLSTDFSSQKGVKGVPLNLQIDTYDCGLGT
 ERLVHRAVCQIKIFCDKGAERKMRDDERKQFRRKVKCPDSSNSGVKGCLLSGFRG
 NETTYLRPETDLETPPVLFIPNVHFSSLQRSGGAAPSAGPSSSNRLPLKRTCSPFTE
 EFEPLPSKQAKEGDLQRVLLYVRRETEEVFDALMLKTPDLKGLRNAISEKYGFPEENI

 Tel: 1-631-559-9269 1-516-512-3133

 Email: info@creative-biomart.com  Fax: 1-631-938-8127

 45-1 Ramsey Road, Shirley, NY 11967, USA

YKVYKKCKRGILVNMDNIIQHYSNHVAFLLDMGELDGKIQIILKELTRTRPLEQKLISE
EDLAANDILDYKDDDDKV

Purity > 80% as determined by SDS-PAGE and Coomassie blue staining

Stability Stable for 3 months from receipt of products under proper storage and handling conditions.

Storage Store at -80 centigrade. Avoid repeated freeze-thaw cycles.

Concentration 50 µg/mL as determined by BCA

Storage Buffer 100 mM glycine, 25 mM Tris-HCl, pH 7.3.

GENE INFORMATION

Gene Name GRHL3 grainyhead like transcription factor 3 [Homo sapiens (human)]

Official Symbol GRHL3

Synonyms GRHL3; grainyhead-like 3 (Drosophila); TF2CP2L4, transcription factor CP2 like 4; grainyhead-like protein 3 homolog; SOM; transcription factor hSOM1; sister of mammalian grainyhead; sister-of-mammalian grainyhead; transcription factor CP2-like 4; TF2CP2L4; MGC46624;

Gene ID 57822

mRNA Refseq NM_198174

Protein Refseq NP_937817

 Tel: 1-631-559-9269 1-516-512-3133

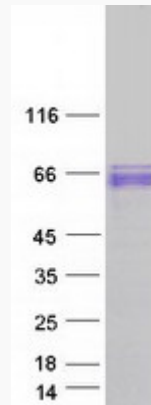
 Email: info@creative-biomart.com  Fax: 1-631-938-8127

 45-1 Ramsey Road, Shirley, NY 11967, USA

MIM 608317

UniProt ID Q8TE85

SDS-PAGE



 Tel: 1-631-559-9269 1-516-512-3133

 Email: info@creative-biomart.com  Fax: 1-631-938-8127

 45-1 Ramsey Road, Shirley, NY 11967, USA